



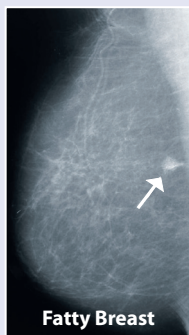
SonoCiné[®]
Automated Whole Breast Ultrasound

**for Women with Dense Breasts
and/or Breast Implants**

MAMMOGRAPHY

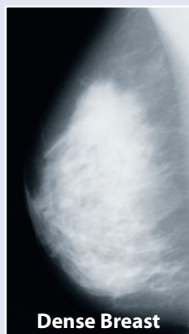
Fatty Breasts

Spotting tiny cancers on the mammogram of a fatty breast is easier because cancer appears white on dark fatty-breast tissue, as shown here.



Dense Breasts

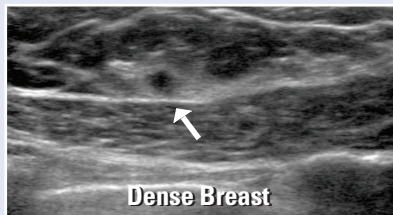
Cancers are harder to find on the mammogram of a dense breast because both cancer and dense-breast tissue appear white.



ULTRASOUND

SonoCiné AWBUS

With ultrasound, cancers appear dark against the white background of dense-breast tissue, making the cancer easier to see.



This image shows a 6mm cancer not detected on the mammogram

SonoCiné
AWBUS

Automated Whole Breast Ultrasound

Ask Your Doctor
Or call: 775-851-7474

Visit Our Website at: www.sonocine.com

**A Comfortable Pain Free Ultrasound Examination
No Compression • No Radiation • No Contrast Agent.**

Data cited in this brochure was derived from:

Pisano ED, et al, "Diagnostic Performance of Digital versus Film Mammography for Breast Cancer Screening", *New England Journal of Medicine*, Vol 353, No. 17, 2005, pp 1773-83

Berg WA, et al, "Combined Screening With Ultrasound and Mammography vs Mammography Alone in Women at Elevated Risk of Breast Cancer", *Journal of the American Medical Association*, Vol 299, No. 18, 2008, pp 2151-2163

Kelly KM, et al, "Breast cancer detection using automated whole breast ultrasound and mammography in radiographically dense breasts", *European Radiology*, Vol 20, 2010, pp 734-742



**Mammography Misses
50 to 60% of Breast Cancers
in Women with
Dense-Breast Tissue**

AWBUS
Automated Whole Breast Ultrasound
Finding Cancers When They Are Small

**Peace of Mind
Beyond Your Mammogram**

What is SonoCiné®

For women with dense breasts and/or breast implants, SonoCiné Automated Whole Breast Ultrasound (AWBUS) is a supplementary ultrasound examination of both breasts designed to find small cancers that are missed by mammography. It is not a replacement for screening mammography. However, mammography is not a perfect examination for women with dense breasts. SonoCiné AWBUS can increase confidence in your diagnosis.

Studies show that more cancers are found in women with dense-breast tissue when an ultrasound examination is added to the screening mammogram.

Our goal is to find cancers when they are small and easier to treat.

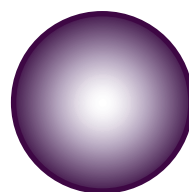
Research Shows

- Early detection can increase breast cancer survival.
- Finding cancers when they are small saves lives.
- Mammography misses 50 to 60% of all breast cancers in women with dense-breast tissue (DBT).
- Automated Whole-Breast Ultrasound (AWBUS) in addition to mammography, may find as much as 100% more cancers in women with dense breasts than can be found by mammography alone.
- A woman with DBT needs BOTH a mammogram and a supplemental whole-breast ultrasound.
- Mammography detects cancers (like calcifications) that cannot be seen well by ultrasound and ultrasound detects cancers (like invasive fast growing cancers) that cannot be seen well by mammography.

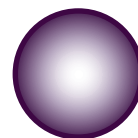
Ask Your Doctor If You Have Dense Breasts.



Average size cancer found by ...



Self-Exam
(approx 25mm)



Mammography
(approx 17mm)



Ultrasound in
Dense Breasts
(approx 10mm)

If you do have dense breasts and breast implants, consider a SonoCiné AWBUS examination in addition to your mammogram.



SonoCiné AWBUS is a fully documented whole breast examination designed to find cancers when they are small and easier to treat.

What to Expect

SonoCiné is an Automated Whole Breast Ultrasound examination. Ultrasound uses sound waves and is safe for unborn children and therefore, safe for your breast tissue!

- It is painless
- No breast compression
- No radiation
- No injections
- Takes about 20 to 30 minutes
- Is permanently recorded for your physician's review and follow-up
- Interpretation of your study is done by a radiologist or other trained physician
- A report is sent to your referring provider following the examination

Whole Breast Coverage (All at Risk Breast Tissue)



Lower Lymph Nodes



Outer Breast Tissue



Clavicle



Inner Breast Tissue

Is SonoCiné AWBUS Covered by Insurance?

SonoCiné AWBUS is cleared by the FDA as an additional examination in conjunction with screening mammography. Because it is considered supplementary, some insurance companies currently do not cover the cost of this examination. Check with your insurance plan.