



Catalog for LumiLEDs

LED Coolers



Mingfa Tech Manufacturing Limited
Tel: +86-769-33252828 +86-769-33251919
E-fax: +86-(020)28819702 ext:22122
Email: sales@mingfatech.com
[Http://www.heatsinkled.com](http://www.heatsinkled.com)
[Http://www.mingfatech.com](http://www.mingfatech.com)

Version-2015

EtraLED LED Cooling Series

EtraLED-LUM-4850

LumiLEDs Modular Star LED
Heat Sink
For Luxeon COB 1202,1203;
Luxeon K 3-UP/4-UP/6-UP/8-UP
direct mounting
Or with Zhaga LED holder,
ø48mm – h50mm - Rth 4.2° C/W.
Cooling performance 600 - 1600 lm.



EtraLED-LUM-4880

LumiLEDs Modular Star LED
Heat Sink
For Luxeon COB 1202,1203;
Luxeon K 3-UP/4-UP/6-UP/8-UP
direct mounting
Or with Zhaga LED holder,
ø48mm – h80mm - Rth 3.6° C/W.
Cooling performance 800 - 2000 lm.



EtraLED-LUM-7050

LumiLEDs Modular Star LED
Heat Sink
For Luxeon COB 1202,1203;
Luxeon K 3-UP/4-UP/6-UP/8-UP
direct mounting
Or with Zhaga LED holder,
ø70mm – h50mm - Rth 2.2° C/W
Cooling performance 900 - 2800 lm



EtraLED-LUM-7080

LumiLEDs Modular Star LED
Heat Sink
For Luxeon COB
1202,1203,1204,1205;
Luxeon K 3-UP/4-UP/6-UP/8-UP
direct mounting
Or with Zhaga LED holder,
ø70mm – h80mm - Rth 1.8° C/W
Cooling performance 1200 - 3300 lm



EtraLED-LUM-8550

LumiLEDs Modular Star LED
Heat Sink
For Luxeon COB
1202,1203,1204,1205;
Luxeon K 6-UP/8-UP/12-UP
direct mounting
Or with Zhaga LED holder,
ø85mm – h50mm - Rth 1.5° C/W
Cooling performance 1800 - 4200 lm



EtraLED-LUM-8580

LumiLEDs Modular Star LED
Heat Sink
For Luxeon COB 1203,1204,1205
Luxeon K 6-UP/8-UP/12-UP/16-UP
direct mounting
Or with Zhaga LED holder,
ø85mm – h80mm - Rth 1.3° C/W
Cooling performance 2000 - 4700 lm



EtraLED-LUM-9650

LumiLEDs Modular Star LED
Heat Sink
For Luxeon COB 1204,1205,1208
Luxeon K 6-UP/8-UP/12-UP/16-UP
direct mounting
Or with Zhaga LED holder,
ø96mm – h50mm - Rth 1.2° C/W
Cooling performance 1500 - 4500 lm



EtraLED-LUM-9680

LumiLEDs Modular Star LED
Heat Sink
For Luxeon COB
1204,1205,1208,1211
Luxeon K 8-UP/12-UP/16-UP/24-UP
direct mounting
Or with Zhaga LED holder,
Ø96mm – h80mm - Rth 0.9° C/W
Cooling performance 2000 - 5800 lm



EtraLED-LUM-11050

LumiLEDs Modular Star LED
Heat Sink
For Luxeon COB
1204,1205,1208,1211
Luxeon K 12-UP/16-UP/24-UP
direct mounting
Or with Zhaga LED holder,
ø110mm – h50mm - Rth 1.1° C/W
Cooling performance 2500 - 6000 lm



EtraLED-LUM-11080

LumiLEDs Modular Star LED
Heat Sink
For Luxeon COB
1204,1205,1208,1211
Luxeon K 16-UP/24-UP
direct mounting
Or with Zhaga LED holder,
ø110mm – h80mm - Rth 0.9° C/W
Cooling performance 3300 - 7400 lm



EtraLED-LUM-13050

LumiLEDs Modular Star LED
Heat Sink
For Luxeon COB
1204,1205,1208,1211
Luxeon K 16-UP/24-UP
direct mounting
Or with Zhaga LED holder,
ø130mm – h50mm - Rth 0.9° C/W
Cooling performance 2500 - 6500 lm



EtraLED-LUM-13080

LumiLEDs Modular Star LED
Heat Sink
For Luxeon COB
1204,1205,1208,1211
Luxeon K 16-UP/24-UP
direct mounting
Or with Zhaga LED holder,
ø110mm – h80mm - Rth 0.7° C/W
Cooling performance 3500 - 8200 lm



EtraLED-LUM-130100

LumiLEDs Modular Star LED
Heat Sink
For Luxeon COB 1205,1208,1211
Luxeon K 24-UP
direct mounting
Or with Zhaga LED holder,
ø110mm – h50mm - Rth 0.65° C/W
Cooling performance 5000 - 8800 lm



GooLED LED Cooling Series

GooLED-LUM-4868

LumiLEDs Modular Pin Fin LED
Heatsink
For Luxeon COB 1202,1203;
Luxeon K 3-UP/4-UP;6-UP/8-UP;
direct mounting
Or with Zhaga LED holder,
ø48mm – h68mm - Rth 3.7° C/W
Cooling performance 900 - 3000 lm



GooLED-LUM-5850

LumiLEDs Modular Pin Fin LED
Heatsink
For Luxeon COB 1202,1203;
Luxeon K 3-UP/4-UP;6-UP/8-UP;
12-UP/16-UP direct mounting
Or with Zhaga LED holder,
ø58mm – h50mm - Rth 3.° C/W
Cooling performance 700 - 1800 lm



GooLED-LUM-6830

LumiLEDs Modular Pin Fin LED
Heatsink
For Luxeon COB 1202,1203;
Luxeon K 3-UP/4-UP;6-UP/8-UP;
12-UP/16-UP direct mounting
Or with Zhaga LED holder,
ø68mm – h30mm - Rth 3.5° C/W
Cooling performance 700 - 1800 lm



GooLED-LUM-6850

LumiLEDs Modular Pin Fin LED
Heatsink
For Luxeon COB 1202,1203;
Luxeon K 3-UP/4-UP;6-UP/8-UP;
12-UP/16-UP direct mounting
Or with Zhaga LED holder,
ø68mm – h50mm - Rth 2.7° C/W
Cooling performance 900 - 2400 lm



GooLED-LUM-7830

LumiLEDs Modular Pin Fin LED
Heatsink
For Luxeon COB 1202,1203,1204;
Luxeon K 6-UP/8-UP;12-UP/16-UP
direct mounting
Or with Zhaga LED holder,
ø78mm – h30mm - Rth 2.7° C/W
Cooling performance 700 - 2400 lm



GooLED-LUM-7850

LumiLEDs Modular Pin Fin LED
Heatsink
For Luxeon COB 1204,1205;
Luxeon K 6-UP/8-UP;12-UP/16-UP
direct mounting
Or with Zhaga LED holder,
ø78mm – h50mm - Rth 2.1° C/W
Cooling performance 1200 - 3200 lm



GooLED-LUM-11050

LumiLEDs Modular Pin Fin LED
Heatsink
For Luxeon COB 1204,1205;
Luxeon K 12-UP/16-UP;24-UP
direct mounting
Or with Zhaga LED holder,
ø110mm – h50mm - Rth 1.3° C/W
Cooling performance 1500 - 5000 lm



GooLED-LUM-11080

LumiLEDs Modular Pin Fin LED
Heatsink
For Luxeon COB
1204,1205,1208,1211
Luxeon K 12-UP/16-UP;24-UP
direct mounting
Or with Zhaga LED holder,
ø110mm – h80mm - Rth 1.0° C/W
Cooling performance 2500 - 6500 lm



SimpoleD LED Cooling Series

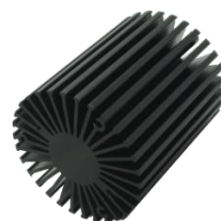
SimpoleD-LUM-5850

LumiLEDs Modular Star LED
Heat Sink
For Luxeon COB 1202,1203;
Luxeon K 3-UP/4-UP;6-UP/8-UP;
direct mounting
Or with Zhaga LED holder.
ø58mm – h50mm - Rth 3.7° C/W
Cooling performance 400 - 1500 lm



SimpoleD-LUM-5870

LumiLEDs Modular Star LED
Heat Sink
For Luxeon COB 1202,1203;
Luxeon K 3-UP/4-UP;6-UP/8-UP;
direct mounting
Or with Zhaga LED holder.
ø58mm – h50mm - Rth 2.9° C/W
Cooling performance 400 - 1900 lm



SimpoleD-LUM-8150

LumiLEDs Modular Star LED
Heat Sink
For Luxeon COB 1202,1203,1204
Luxeon K 6-UP/8-UP;12-UP/16-UP;
direct mounting
Or with Zhaga LED holder.
ø81mm – h50mm - Rth 1.9° C/W
Cooling performance 900 - 2400 lm



SimpoleD-LUM-8180

LumiLEDs Modular Star LED
Heat Sink
For Luxeon COB 1203,1204,1205
Luxeon K 6-UP/8-UP;12-UP/16-UP;
direct mounting
Or with Zhaga LED holder.
ø81mm – h80mm - Rth 1.6° C/W
Cooling performance 1500 - 3700 lm



SimpoleD-LUM-11750

LumiLEDs Modular Star LED
Heat Sink
For Luxeon COB 1204,1205,1208
Luxeon K 12-UP/16-UP;24-UP
direct mounting
Or with Zhaga LED holder.
ø117mm – h50mm - Rth 0.97° C/W
Cooling performance 1500 - 6000 lm



SimpoleD-LUM-11780

LumiLEDs Modular Star LED
Heat Sink
For Luxeon COB 1204,1205,1208
Luxeon K 12-UP/16-UP;24-UP
direct mounting
Or with Zhaga LED holder.
Ø117mm – h80mm - Rth 0.82° C/W
Cooling performance 3000 - 7300 lm



SimpoleD-LUM-160100

LumiLEDs Modular Star LED
Heat Sink
For Luxeon COB
1204,1205,1208,1211
Luxeon K 12-UP/16-UP;24-UP
direct mounting
Or with Zhaga LED holder.
Ø160mm - h100mm- Rth 0.48° C/W
Cooling performance 5000-10000 lm



SimpoleD-LUM-160150

LumiLEDs Modular Star LED
Heat Sink
For Luxeon COB
1204,1205,1208,1211
Luxeon K 12-UP/16-UP;24-UP
direct mounting
Or with Zhaga LED holder.
Ø160mm- h150mm - Rth 0.48° C/W
Cooling performance 5000-13000 lm



.....End.....