

Data Enquiry Made Easy

CS*Enquire is an easy to use data enquiry tool designed specifically for the *Oracle E-Business Suite*. It provides the user with a fully integrated and simple interface for querying the database. CS*Enquire is built directly into *Oracle E-Business Suite* with a familiar look and feel to ensure the user feels right at home.

Easy, Integrated Enquiry

CS*Enquire is simplicity itself; enter your SQL statement and see the results, all directly from within *Oracle E-Business Suite*. There is no need to use a tool that is external to Oracle since CS*Enquire is available directly from the users standard navigator menu.

Secure Enquiry

Using CS*Enquire you control who can access what data. Each user must be registered within CS*Enquire as either a *Full*, *Restricted* or *Read-Only* user and each user must be granted access to the appropriate schemas with the database. This allows you to deploy CS*Enquire to users without worrying about them accessing inappropriate data.

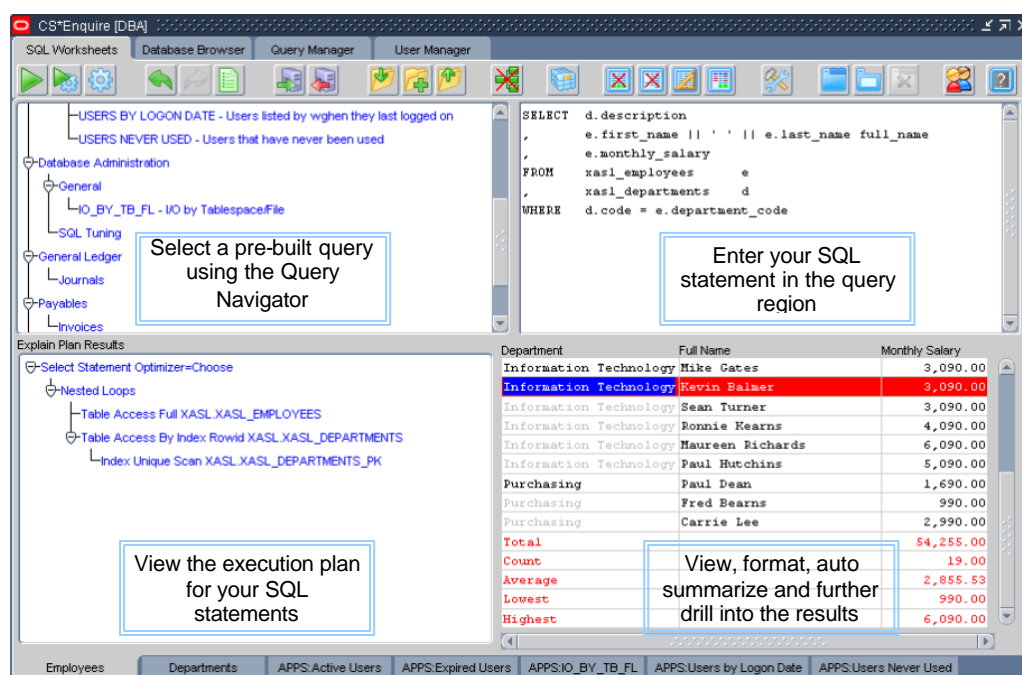


Figure 1: The CS*Enquire SQL Worksheet region.

Create, Store, Organize and Share Queries

Using CS*Enquire you can create queries that can be stored for use later. You can organize queries into *Classes* and *Groups* that can then be quickly accessed using the hierarchical *Query Navigator*. Queries can be stored as public, private or be made available to a specific group of users using the *Query Manager*. This allows you to build a library of useful and common queries either for yourself or for others across your company or department.

ENQUIRE™

CS



Format and Auto Summarize the Results

You can easily format and auto-summarize the results. You can specify the column heading, width, formatting and whether you want to show summary information for any column. These attributes are saved along with the query so you don't lose your formatting setup.

Progressively Drill into the Results

Once you have executed a query, you can quickly and progressively drill down into the results simply with a right click on the mouse, there is no need to alter your SQL to further refine the results. You can also put the results area into query-mode and *query by example* just like any other standard form.

Parameter Driven Queries

CS*Enquire supports full use of bind variables to allow you to parameterise your queries. Bind variables can be customised using the built-in *Bind Bank*.

Database Browser

There is also a simple *Database Browser* to allow you to quickly browse various types of object with the database.

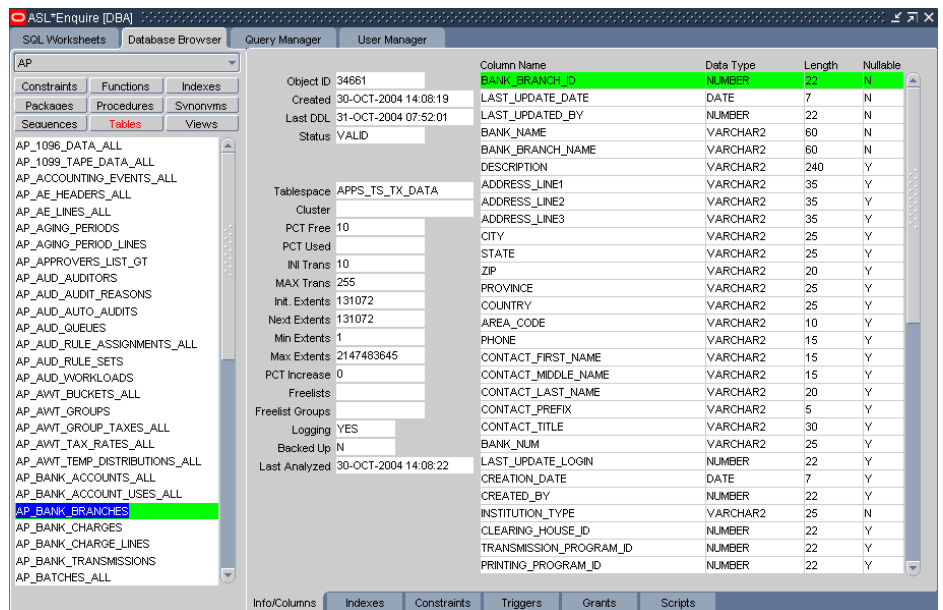


Figure2: The CS*Enquire Database Browser region.

For more information...

For more information and to buy online...

www.caosys.com