

The BBS.GreatPlains.ToolKit works with the following data-sets  
Dynamics GP and provides the data access layers required.

**BBS.Framework**

- BOM, Cash, Batch, General Ledger, Accounts Receivable, Customer Master, Accounts Payable, Terms, Vendor Master, Inventory Transactions, Item Master, POP, SOP, Shipping Methods, Sales Tax, Sales Territory, Manufacturing, Batch, HR, Field Service, Module Set-Ups, Certification Manager

**BBS.Integration**

- **Compose**—AP, AR, Cash Rcpts, Customer, GL, Inventory Items, Inventory Transactions, POP, SOP, Vendor
- **Consume**—AP, AR, Cash Rcpt, Certification Mgr, Company Master, Credit Card, Customer, Employee, HR Training, GL, Inventory Trans, Inventory Trx, Pay Run, PO, Sales, Salesperson, Shipping Methods, Vendor

**BBS.Migration**

- AR History, AP History, Bank Master, Checkbook, Credit Card, Field Service Contracts, Account Master, GL Trx History, Vendors, Customers, Inventory Items, Inventory locations, Inventory Planner, Inventory Price Group, Inventory Price Level, Inventory Trx History, Inventory Trx Work, Inventory Uof M, Salesperson, Sales Territory, SO Trx History, Payment Terms, Posting Acct Master, Shipping Methods, SY Source Documents, Employees, Payroll Set-Up, Payroll Transactions.

**About Bridge Builder Software**

Bridge Builder Software provides solutions and consultation to all Dynamics GP and system software needs. Bridge Builder Software has the only Great Plains integration that is 100% .NET and the only tool that migrates data to GP historical tables.

Bridge Builder Software can provide you with solutions or assistance with Dynamics GP. We can deliver your solution with BBS.GreatPlains, MS SQL Server, .NET, Visual Basic, eConnect, MSMQ, BizTalk, Dexterity and many other tools.

We not only provide solutions and assistance for Dynamics but we can and will provide solutions and assistance to any development effort you have a need for.



16449 54 Street South East  
Kindred, ND 58051  
Ph. 701.428.9900  
sales@bridgebuildersoftware.com

[www.bridgebuildersoftware.com](http://www.bridgebuildersoftware.com)

**BRIDGE BUILDER  
SOFTWARE**  
INTEGRATION SOFTWARE



**BBS.GreatPlains**  
bridging the **gap**

Integration  
Migration  
Development  
Tools



# Bridge Builder Software

BRIDGING THE GAP BETWEEN SERVERS, PEOPLE AND TECHNOLOGY

With an ever growing need for integration between systems and the use and retention of actual historical information, Bridge Builder software can perfectly position you to bridge any gap. Whether you have online store fronts, parent company or subsidiary company integrations, or need to migrate full and complete historical data from a legacy system — integration and migration to Microsoft Dynamics GP is a must. Understanding the importance of rapid development, Bridge Builder Software has

developed the BBS.GreatPlains.Toolkit, a fully featured, simple and quick to implement system integration with Dynamics GP. See your business reach its full potential by integrating your systems and full migrating data to Dynamics GP with BBS.GreatPlains.Toolkit. Bridge Builder Software is leading the industry in software integration and data migration, particularly with Dynamics GP. Using our tools and products you can seamlessly develop business critical reports, Web Stores, Web Services, Smart Device tools and much more.



## SUPPORTED MODULES

- GENERAL LEDGER
- ACCOUNTS RECEIVALBE
- ACCOUNTS PAYABLE
- SALES ORDERS
- PURCHASE ORDERS
- INVENTORY
- BILL OF MATERIALS
- HUMAN RESOURCES
- PAYROLL

# flexible solutions for Dynamics GP

REDUCE THE COSTS AND EFFORTS REQUIRED TO MAINTAIN DYNAMICS GP INTEGRRTIONS

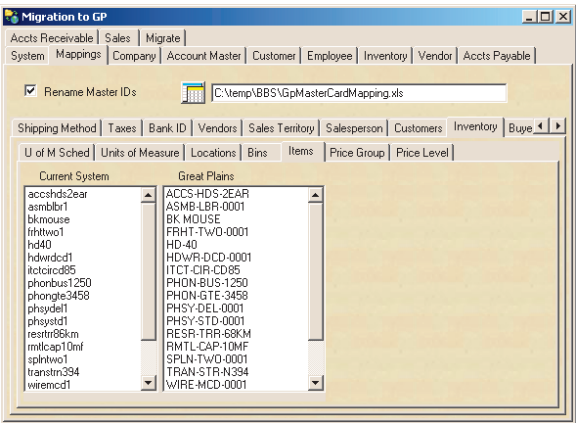
## BBS.GREATPLAINS FRAMEWORK

**The right tool with the latest technology.** The BBS.GreatPlains Framework provides you with the means to develop technologies that allow your staff and customers complete access to Dynamics GP data. Whether you're developing a solution to report vendor, customer, financials, or employee information, a solution for Smart Device or Smart Phone customers, web store fronts, web services, order entry systems, purchasing systems, or simply listing out customers, the BBS.GreatPlains Framework was designed for your needs.

The fundamental design behind the solution allows your systems integration to continue working regardless of the version of Dynamics GP. Currently the framework includes GL, AP, AR, SOP, POP, Employee, Vendors, Customers, Payroll, HR, dozens of company and system tables, Bill Of Materials, Field Service, Manufacturing, Grant Management, and much more. The Integration and Migration products utilize the framework.

## BBS.GREATPLAINS INTEGRATION

**The right choice when integrating with Great Plains.** BBS.GreatPlains.Integration is where everything is brought together. If you need a solution to integrate with Dynamics GP, BBS.GreatPlains.Integration is the



solution you need. The fundamental design behind the solution allows your systems integration to continue working regardless of the version of Dynamics GP. You also receive the BBS.GreatPlains. WebService which allows you as much access as you like. Solutions across your company now have access to the information they need. If your needs require other staff members to create or update customer or employee information your solution will undoubtedly need BBS.GreatPlains.WebService.

## BBS.GREATPLAINS MIGRATION

BBS.GreatPlains.Migration is the only migration product available to migrate your data from your current system to Dynamics GP. And, it's the only tool available that migrates your data to your Dynamics GP Historical tables. There's no need to post and apply what was posted last year or years before.



**BBS.MIGRATION**  
Historical, Open and Work table data migration.



**BBS.INTEGRATION**  
Real-time and easy to understand integration set-up.



**BBS.FRAMEWORK**  
Enabling developers to easily create new and fully integrated Dynamics GP tools faster and more efficiently.