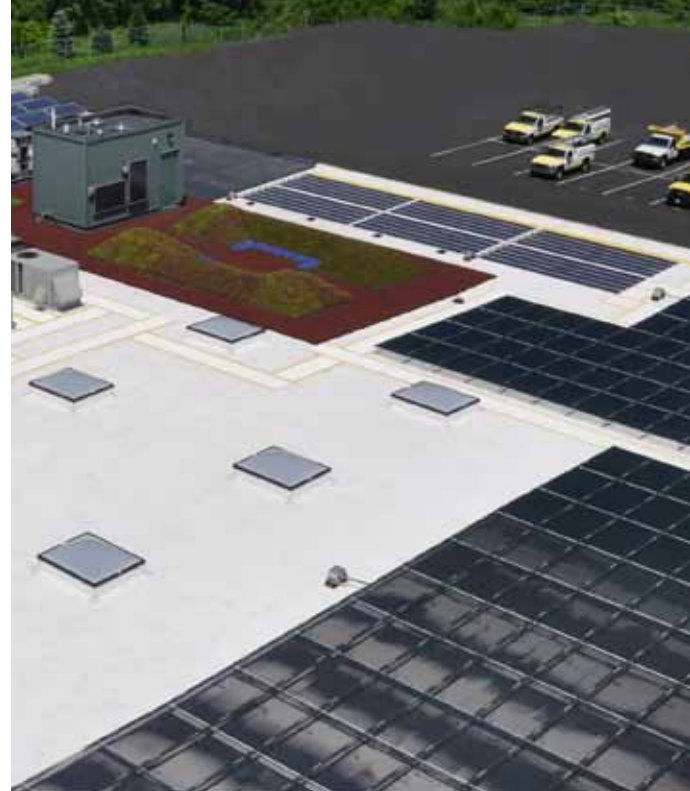




RoofConnect[®]

NATIONAL ROOFING SERVICES



NATIONWIDE. ONE CALL. ONE ANSWER.



24/7/365



When you have a roof concern, one call to RoofConnect is the only call you will need to make. One call offers a seamless client experience to solve your roofing needs.

Work Order: Your service request is handled by your dedicated customer service representative.



Work Order Dispatched: Your work order is dispatched to a RoofConnect Contractor located in your service area.



ETA Response: Your RoofConnect customer service representative will report an estimated time of arrival for the service call.



Member Contractor Response: The local site manager is contacted with an estimated time of arrival.



Crew Dispatched: The work is performed in accordance to safety and quality standards.



Work Order Complete: A Work Summary Report/Follow up is provided to the client and the work order is finalized.

Our customer service department never closes. RoofConnect offers emergency response coverage 24 hours a day, 365 days a year.

Call **877-942-5613, 24 / 7 / 365.**
Nationwide. One Call. One Answer.



OUR SERVICE. YOUR SUCCESS.

ROOFCONNECT IS THE LEADING NATIONAL ROOFING, WATERPROOFING, AND SHEET METAL SERVICE PROVIDER IN THE COUNTRY.

Every RoofConnect member promises comprehensive and lasting solutions to your roofing needs. For service, repair, maintenance, emergency service, roof restoration, historic renovation, solar or green energy solutions, and even new roof construction, RoofConnect is here. We have the resources, experience, and commitment to get the job done right. Our members are based in the regions they serve. Our reputations are based on the trusted, quality work we provide.

ROOFCONNECT OFFERS STRAIGHTFORWARD FACTS ABOUT YOUR ROOF:

There is no such thing as a maintenance-free roof.

Your roof system performance does not improve with age.

No other single building component is more critical to the smooth operation of your business.

Potential losses resulting from a failed roof system are staggering.

We have the resources, experience, and local nationwide coverage to handle all of your roofing inventory.

MAXIMIZE THE LIFE OF YOUR ROOF. PROTECT YOUR INVESTMENT, INVENTORY AND YOUR CUSTOMERS.

RoofConnect understands the unique characteristics and demands placed on roofs. Preventative maintenance and proper roof portfolio management will help you to achieve the true service life and value of your roofs. Our full service approach to your roofing assets can prevent the premature failure of your most critical building component, your roof.

We don't just fix the symptoms of a failing roof, we take a long-term and comprehensive approach to every aspect of your roofing needs. Our methods can realize the possibility of your roof as an income generator.

As green energy and solar technology changes and advances rapidly, RoofConnect has positioned itself and created partnerships with key resources in these industries.

RoofConnect is your connection for managed, sustainable, energy producing roofing solutions.



**HELPING OUR CLIENTS REALIZE
THEIR ROOFING OBJECTIVES**

We know that you have a choice when it comes to selecting a roofing services provider. Now you can choose without reservation.

RoofConnect, the one stop solution for all your roofing needs.

**GIVE US YOUR WORST;
WE'LL GIVE YOU OUR BEST.**

CALL 877.942.5613



our mission:

As the leading national commercial roofing services provider, we must exceed our customers' expectations through round-the-clock availability, timely response, superior service, quality workmanship and professional communication.

RoofConnect. National Roofing Services.

