

Count on CAT 6A cabling solutions that work as hard as you.

Major network installations are never a trial and error situation. Errors are too costly to even consider. You need structured cabling that works – from a dedicated partner that values relationships above all else. No problem. That's everything you can expect from comCables. All complete solutions are backed by the comCables Total Assurance Lifetime Warranty.

Available Products

- ✓ Bulk Cable
- ✓ Patch Cable
- ✓ Patch Panels
- ✓ Jacks
- ✓ Rapid Punch Tool

Supreme value. Ultimate performance.

comCables™
STRUCTURED CABLING

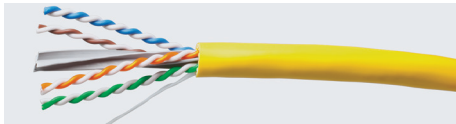


With comCables CAT 6A structured cabling, you'll experience better performance with less signal loss and crosstalk.

CAT 6A structured cabling solutions give you the tools for lasting network installation success.

comCables CAT 6A solutions are ideal for today's 10-gigabit Ethernet networks. Our commitment to quality ensures a product line that complies with every applicable code and standard, so that your CAT 6A installations meet all electrical channel performance requirements. Expect higher value today with performance that meets the needs of tomorrow's more demanding networks. And of course, all comCables CAT 6A structured cabling products come with a Lifetime Warranty and an available 25-year application assurance warranty sold through our network of qualified Certified Installation Partners (CIP) contractors.

Bulk Cable



CAT 6A PVC Cable

BC-C6APVC-XX

Specifications:

Cable Type: UTP

Jacket Material: Flame-retardant PVC

Conductor Material: Solid Bare Copper

Conductor Gauge: 23AWG

ETL Verified TIA-568-C.2-10, & ISO/IEC 11801

ROHS Compliant

XX=Available in White & Blue

Patch Cable



CAT 6A Shielded Patch Cable

Snagless Shielded

N-12111-*M-XX

Specifications:

Cable Type: S/FTP

Category 6A

ETL Verified TIA-568-C.2, & ISO/IEC 11801

*=Available in 1ft, 2ft, 3ft, 5ft, 7ft, 10ft, 14ft, 25ft, 50ft, 75ft, 100ft

XX=Available in White & Blue

Patch Panels



24 Port Keystone Panel Blank Flush Mount

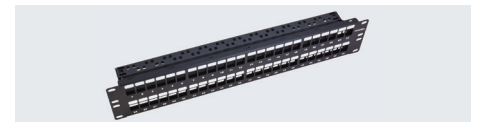
PP-K24-FM-C

Material: 16 AWG Steel

TIA 19 in rack mount

Write-on labeling areas

Wire manager bar and screws included



48 Port Keystone Panel Blank Flush Mount

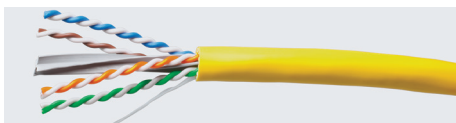
PP-K48-FM-C

Material: 16 AWG Steel

TIA 19 in rack mount

Write-on labeling areas

Wire manager bar and screws included



CAT 6A Plenum Cable

BC-C6APL-XX

Specifications:

Cable Type: UTP

Jacket Material: Low Smoke

Conductor Material: Solid Bare Copper

Conductor Gauge: 23AWG

ETL Verified TIA-568-C.2-10, & ISO/IEC 11801

ROHS Compliant

XX=Available in White & Blue

Jacks



CAT 6A 10-Gig Shielded Jack

CN-C6A-XX

Specifications:

Meets ANSI/TIA-568-C.2

CAT 6 Channel 15M Short

Permanent Link Requirements

Safety Standard cUL | UL

XX=Available in White, Ivory, Black & Blue

Rapid Punch Tool



90-Degree Rapid Punch Down Tool

TO-CRIMP-90-RPT-C

Material: Steel

Efficient and quick jack termination

Comfortable rubber grip handle

Also compatible with comCables CAT 6, 5E, and 3 Performance Jacks

Learn more about the full line of comCables CAT 6A structured cabling solutions, and see our complete catalog of structured cabling solutions that are designed to perform up to the most important standard. Yours.

comCables.com
866.302.3301



We trust in the quality of our products so much that we stand behind them long after they leave our facility. If you have a problem with a comCables product or we make a mistake, we will make it right. Our 25 Year Application Assurance Guarantees that applications designed to work on the cabling type being installed (Category 5e, 6, 6A) will perform to standards for 25 years. The Limited Lifetime Warranty ensures our products to be free of defects in materials that would cause performance or safety degradation. This warranty covers the replacement of our materials.