



# *Catalog for Tridonic LED Coolers*



Mingfa Tech Manufacturing Limited  
Tel: +86-769-33252828 +86-769-33251919  
E-fax: +86-(020)28819702 ext:22122  
Email:sales@mingfatech.com  
[Http://www.heatsinkled.com](http://www.heatsinkled.com)  
[Http://www.mingfatech.com](http://www.mingfatech.com)

***Version-2015***

# EtraLED LED Cooling Series

## EtraLED-TRI-4850

Tridonic Modular Star LED Heat Sink  
For Talexx Stark SLE series LED modules  
Gen3-19 and Gen3 Mini LES-10, -17  
Gen4 Advanced/Excite-15mm  
Direct mounting or with Zhaga LED holder.  
ø48mm – h50mm - Rth 4.2° C/W.  
Cooling performance 600 - 1600 lm.



## EtraLED-TRI-4880

Tridonic Modular Star LED Heat Sink  
For Talexx Stark SLE series LED modules  
Gen3-19, -23 and Gen3 Mini LES-10, -17, Gen4 Advanced/Excite-15mm  
Direct mounting or with Zhaga LED holder.  
ø48mm – h80mm - Rth 3.6° C/W.  
Cooling performance 800 - 2000 lm.



## EtraLED-TRI-7050

Tridonic Modular Star LED Heat Sink  
For Talexx Stark SLE series LED modules  
Gen3-19, -23 and Gen3 Mini LES-10, -17, Gen4 Advanced/Excite-15mm, -19mm, -23mm  
Direct mounting or with Zhaga LED holder.  
ø70mm – h50mm - Rth 2.1° C/W  
Cooling performance 900 - 2800 lm



## EtraLED-TRI-7080

Tridonic Modular Star LED Heat Sink  
For Talexx Stark SLE series LED modules  
Gen3-19, -23 and Gen3 Mini LES-10, -17, Gen4 Advanced/Excite-15mm, -19mm, -23mm  
Direct mounting or with Zhaga LED holder.  
ø70mm – h80mm - Rth 1.75° C/W  
Cooling performance 1200 - 3300 lm



## EtraLED-TRI-8550

Tridonic Modular Star LED Heat Sink  
For Talexx Stark SLE series LED modules  
Gen3-19, -23 and Gen3 Mini LES-17  
Gen4 Advanced/Excite-15mm, -19mm, -23mm  
Direct mounting or with Zhaga LED holder.  
ø85mm – h50mm - Rth 1.5° C/W  
Cooling performance 1800 - 4200 lm



## EtraLED-TRI-8580

Tridonic Modular Star LED Heat Sink  
For Talexx Stark SLE series LED modules  
Gen3-19, -23 and Gen3 Mini LES-17  
Gen4 Advanced/Excite-15mm, -19mm, -23mm  
Direct mounting or with Zhaga LED holder.  
ø85mm – h80mm - Rth 1.3° C/W  
Cooling performance 2000 - 4700 lm



## EtraLED-TRI-9650

Tridonic Modular Star LED Heat Sink  
For Talexx Stark SLE series LED modules  
Gen3-19, -23 and Gen3 Mini LES-17  
Gen4 Advanced/Excite-19mm, -23mm  
Direct mounting or with Zhaga LED holder.  
ø96mm – h50mm - Rth 1.2° C/W  
Cooling performance 1500 - 4500 lm



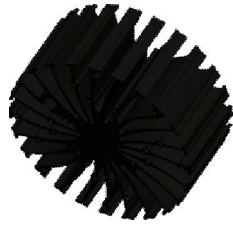
## EtraLED-TRI-9680

Tridonic Modular Star LED Heat Sink  
For Talexx Stark SLE series LED modules  
Gen3-19, -23 and Gen3 Mini LES-17  
Gen4 Advanced/Excite-19mm, -23mm  
Direct mounting or with Zhaga LED holder.  
ø96mm – h80mm - Rth 0.9° C/W  
Cooling performance 2000 - 5800 lm



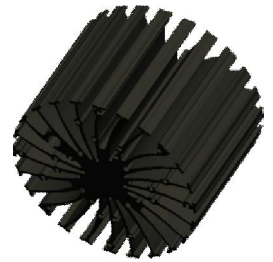
### EtraLED-TRI-11050

Tridonic Modular Star LED Heat Sink  
For Talexx Stark SLE series LED modules  
Gen3-19, -23 and Gen3 Mini LES-17  
Gen4 Advanced/Excite-19mm, -23mm  
Direct mounting or with Zhaga LED holder.  
ø110mm – h50mm - Rth 1.1° C/W  
Cooling performance 2500 - 6000 lm



### EtraLED-TRI-11080

Tridonic Modular Star LED Heat Sink  
For Talexx Stark SLE series LED modules  
Gen3-19, -23 and Gen3 Mini LES-17  
Gen4 Advanced/Excite-19mm, -23mm  
Direct mounting or with Zhaga LED holder.  
ø110mm – h80mm - Rth 0.9° C/W  
Cooling performance 3300 - 7400 lm



## GooLED LED Cooling Series

### GooLED-TRI-4830

Tridonic Modular Pin Fin LED Heatsink  
For Talexx Stark SLE series LED modules  
Gen3-19 and Gen3 Mini LES-10  
Gen4 Advanced/Excite-15mm  
Direct mounting or with Zhaga LED holder .  
ø48mm – h30mm - Rth 5.7° C/W  
Cooling performance 400 - 1200 lm



### GooLED-TRI-4850

Tridonic Modular Pin Fin LED Heatsink  
For Talexx Stark SLE series LED modules  
Gen3-19 and Gen3 Mini LES-10  
Gen4 Advanced/Excite-15mm  
Direct mounting or with Zhaga LED holder.  
ø48mm – h50mm - Rth 4.2° C/W  
Cooling performance 500 - 1600 lm



### GooLED-TRI-4868

Tridonic Modular Pin Fin LED Heatsink  
For Talexx Stark SLE series LED modules  
Gen3-19 and Gen3 Mini LES-10  
Gen4 Advanced/Excite-15mm  
Direct mounting or with Zhaga LED holder.  
ø48mm – h68mm - Rth 3.7° C/W  
Cooling performance 900 - 2000 lm



### GooLED-TRI-5830

Tridonic Modular Pin Fin LED Heatsink  
For Talexx Stark SLE series LED modules  
Gen3-19 and Gen3 Mini LES-10  
Gen4 Advanced/Excite-15mm  
Direct mounting or with Zhaga LED holder.  
ø58mm – h30mm - Rth 4.5° C/W  
Cooling performance 500 - 1500 lm



### GooLED-TRI-5850

Tridonic Modular Pin Fin LED Heatsink  
For Talexx Stark SLE series LED modules  
Gen3-19, -23 and Gen3 Mini LES-10, -17, Gen4 Advanced/Excite-15mm  
Direct mounting or with Zhaga LED holder.  
ø58mm – h50mm - Rth 3.3° C/W  
Cooling performance 600 - 1900 lm



### GooLED-TRI-6830

Tridonic Modular Pin Fin LED Heatsink  
For Talexx Stark SLE series LED modules  
Gen3-19, -23 and Gen3 Mini LES-10, -17, Gen4 Advanced/Excite-15mm  
Direct mounting or with Zhaga LED holder.  
ø68mm – h30mm - Rth 3.5° C/W  
Cooling performance 700 - 1800 lm



### GooLED-TRI-6850

Tridonic Modular Pin Fin LED Heatsink  
For Talexx Stark SLE series LED modules  
Gen3-19, -23 and Gen3 Mini LES-17  
Gen4 Advanced/Excite-19mm, -23mm  
Direct mounting or with Zhaga LED holder.  
ø68mm – h50mm - Rth 2.7° C/W  
Cooling performance 900 - 2400 lm



### GooLED-TRI-6860

Tridonic Modular Pin Fin LED Heatsink  
For Talexx Stark SLE series LED modules  
Gen3-19, -23 and Gen3 Mini LES-17  
Gen4 Advanced/Excite-19mm, -23mm  
Direct mounting or with Zhaga LED holder.  
ø68mm – h60mm - Rth 2.5° C/W  
Cooling performance 1200 - 3000 lm



### GooLED-TRI-7830

Tridonic Modular Pin Fin LED Heatsink  
For Talexx Stark SLE series LED modules  
Gen3-19, -23 and Gen3 Mini LES-17  
Gen4 Advanced/Excite-19mm, -23mm  
Direct mounting or with Zhaga LED holder.  
ø78mm – h30mm - Rth 2.7° C/W  
Cooling performance 700 - 2400 lm



### GooLED-TRI-7850

Tridonic Modular Pin Fin LED Heatsink  
For Talexx Stark SLE series LED modules  
Gen3-19, -23 and Gen3 Mini LES-17  
Gen4 Advanced/Excite-19mm, -23mm  
Direct mounting or with Zhaga LED holder.  
ø78mm – h50mm - Rth 2.1° C/W  
Cooling performance 1200 - 3200 lm



### GooLED-TRI-11050

Tridonic Modular Pin Fin LED Heatsink  
For Talexx Stark SLE series LED modules  
Gen3-19, -23 and Gen3 Mini LES-17  
Gen4 Advanced/Excite-19mm, -23mm  
Direct mounting or with Zhaga LED holder.  
ø110mm – h50mm - Rth 1.3° C/W  
Cooling performance 1500 - 5000 lm



### GooLED-TRI-11080

Tridonic Modular Pin Fin LED Heatsink  
For Talexx Stark SLE series LED modules  
Gen3-19, -23 and Gen3 Mini LES-17  
Gen4 Advanced/Excite-19mm, -23mm  
Direct mounting or with Zhaga LED holder.  
ø110mm – h80mm - Rth 1.0° C/W  
Cooling performance 2500 - 6500 lm



.....To be continued.....

# SimpoleD LED Cooling Series

## SimpoleD-TRI-5850

Tridonic Modular LED Star cooler  
For Talexx Stark SLE series LED  
modules  
Gen3-19 and Gen3 Mini LES-10, -17  
Gen4 Advanced/Excite-15mm  
Direct mounting or with Zhaga LED  
holder.  
ø58mm – h50mm - Rth 4.1° C/W  
Cooling performance 500 - 1300 lm



## SimpoleD-TRI-5870

Tridonic Modular LED Star cooler  
For Talexx Stark SLE series LED  
modules  
Gen3-19, -23 and Gen3 Mini LES-10,  
-17, Gen4 Advanced/Excite-15mm  
Direct mounting or with Zhaga LED  
holder.  
ø58mm – h70mm - Rth 3.2° C/W  
Cooling performance 700 - 2000 lm



## SimpoleD-TRI-8150

Tridonic Modular LED Star cooler  
For Talexx Stark SLE series LED  
modules  
Gen3-19, -23 and Gen3 Mini LES-10,  
-17, Gen4 Advanced/Excite-15mm, -  
19mm, -23mm  
Direct mounting or with Zhaga LED  
holder.  
ø81mm – h50mm - Rth 1.9° C/W  
Cooling performance 1000 - 3200 lm



## SimpoleD-TRI-8180

Tridonic Modular LED Star cooler  
For Talexx Stark SLE series LED  
modules  
Gen3-19, -23 and Gen3 Mini LES-10,  
-17, Gen4 Advanced/Excite-15mm, -  
19mm, -23mm  
Direct mounting or with Zhaga LED  
holder.  
ø81mm – h80mm - Rth 1.6° C/W  
Cooling performance 1500 - 3800 lm



## SimpoleD-TRI-11750

Tridonic Modular LED Star cooler  
For Talexx Stark SLE series LED  
modules  
Gen3-19, -23 and Gen3 Mini LES-17  
Gen4 Advanced/Excite-19mm, -  
23mm  
Direct mounting or with Zhaga LED  
holder.  
ø117mm – h50mm - Rth 1.0° C/W  
Cooling performance 2000 - 6000 lm



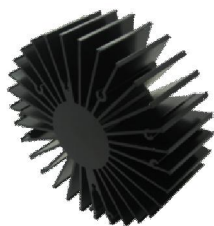
## SimpoleD-TRI-11780

Tridonic Modular LED Star cooler  
For Talexx Stark SLE series LED  
modules  
Gen3-19, -23 and Gen3 Mini LES-17  
Gen4 Advanced/Excite-19mm, -  
23mm  
Direct mounting or with Zhaga LED  
holder.  
ø117mm – h80mm - Rth 0.8° C/W  
Cooling performance 2500 - 7300 lm



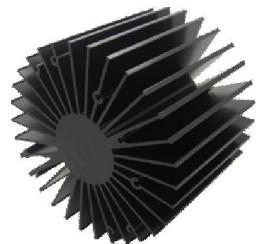
## SimpoleD-TRI-13550

Tridonic Modular LED Star cooler  
For Talexx Stark SLE series LED  
modules  
Gen3-19, -23 and Gen3 Mini LES-17  
Gen4 Advanced/Excite-19mm, -  
23mm  
Direct mounting or with Zhaga LED  
holder.  
ø135mm – h50mm - Rth 0.82° C/W  
Cooling performance 2000 - 7300 lm



## SimpoleD-TRI-13580

Tridonic Modular LED Star cooler  
For Talexx Stark SLE series LED  
modules  
Gen3-19, -23 and Gen3 Mini LES-17  
Gen4 Advanced/Excite-19mm, -  
23mm  
Direct mounting or with Zhaga LED  
holder.  
ø135mm – h80mm - Rth 0.71° C/W  
Cooling performance 3000 - 9000 lm



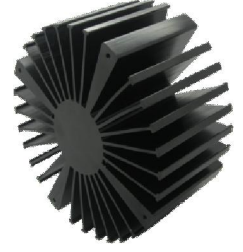
### SimpoLED-TRI-16050

Tridonic Modular LED Star cooler  
Gen3-19, -23  
Gen4 Advanced/Excite-19mm, -  
23mm, Gen4 Essence-23  
Direct mounting on the LED cooler.  
Ø160mm – h50mm - Rth 0.7° C/W  
Cooling performance 3000 - 9000 lm



### SimpoLED-TRI-160100

Tridonic Modular LED Star cooler  
Gen3-19, -23  
Gen4 Advanced/Excite-19mm, -  
23mm, Gen4 Essence-23  
Direct mounting on the LED cooler.  
Ø160mm–h100mm –Rth 0.56° C/W  
Cooling performance 4000-11000 lm



### SimpoLED-TRI-160150

Tridonic Modular LED Star cooler  
Gen3-19, -23  
Gen4 Advanced/Excite-19mm, -  
23mm, Gen4 Essence-23  
Direct mounting on the LED cooler.  
Ø160mm – h150mm - Rth 0.5° C/W  
Cooling performance 5000-12000 lm



### SimpoLED-TRI-14035

Tridonic Modular Star LED Heat  
Sink  
for spot and downlight designs from  
1100 to 3000 lumen direct mounting .  
Ø140mm – h35mm - Rth 1.1° C/W.  
Cooling performance 1100 - 3000 lm.

