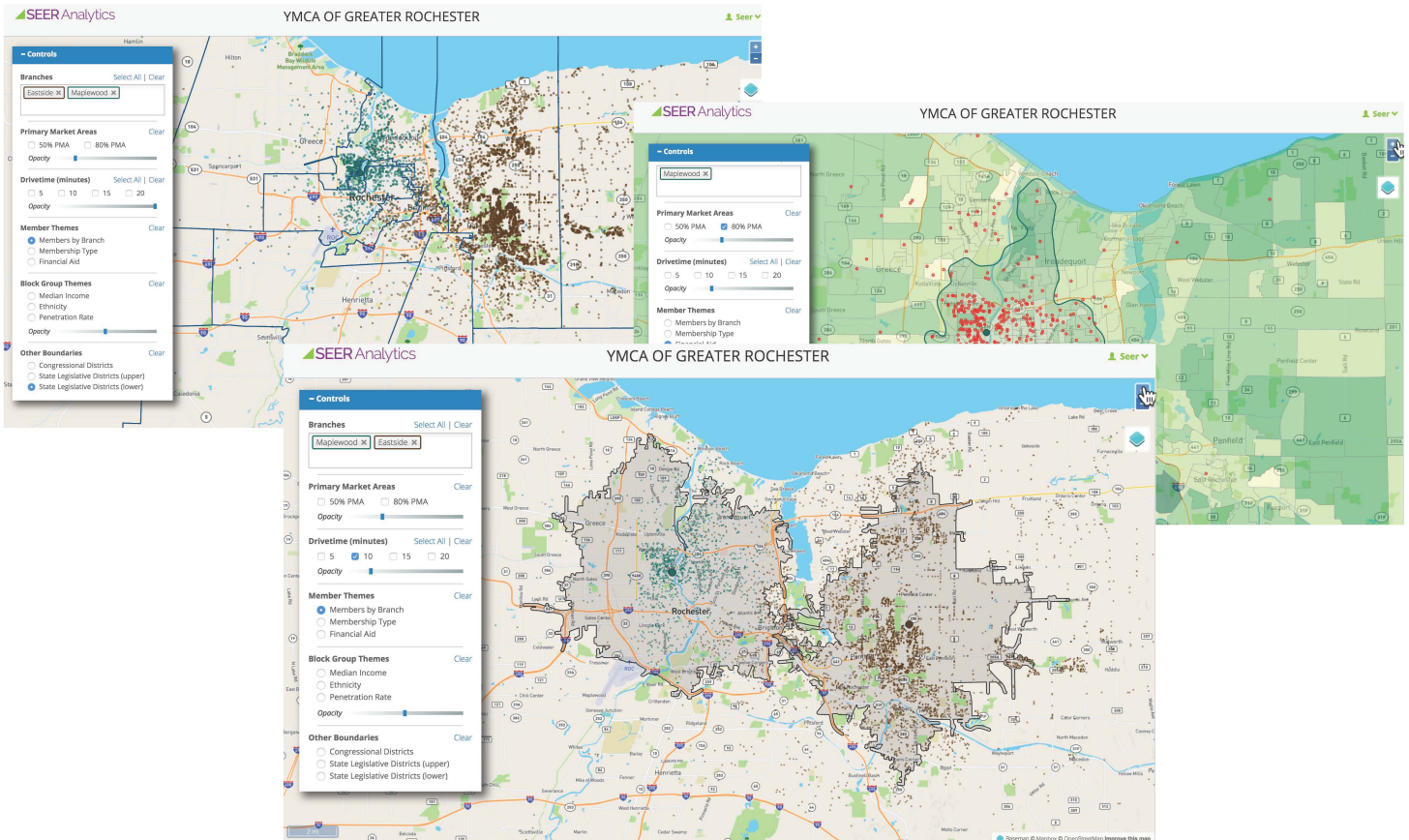


IMAGINE WHAT YOU COULD DO WITH AN INTERACTIVE PMA?

"This will revolutionize the way we use data to place facilities and talk about medical partnerships and community connections. This is game changing work..."

— George Rommel - CEO of The YMCA of Greater Rochester



Key Features of the new Interactive PMA

- Plot both 50% and 80% PMAs
- Multiple drive-times
- Plot members by branch, member type and financial aid
- Control the number of branches seen simultaneously
- Overlay demographics and member penetration
- State House, Senate and Congressional district boundaries
- Display data in four map types, including satellite

Check out the new interactive PMA map
Go to www.seeranalytics.com/pmademo



Contact Aaron for your Demo & Pricing | amueller@seeranalytics.com | 813.441.2287