

# 2 Story Raised Bungalow with **Safe Room**

136.5 m2 or 1,469 SF Under Roof

2nd Floor: Living Room, Kitchen, **Safe Room**,

1 Bedroom/1 bath

3rd Floor: 3 Bedrooms, 2 Baths, Laundry Room

Exterior Raised Deck on 2nd Floor



pan**L**bilt GLOBAL

[www.PanLbilt.com](http://www.PanLbilt.com)

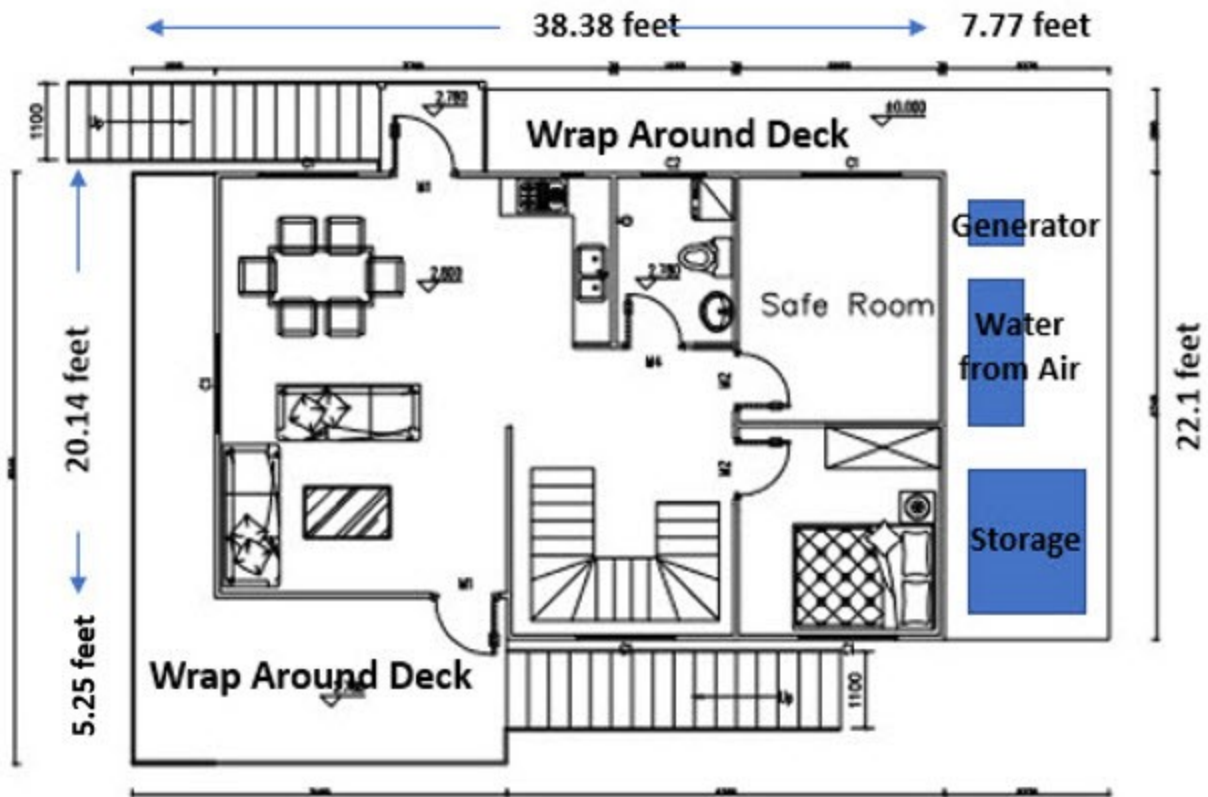
310-720-7226

Contact: Raphael Levy [Raphael@PanLbilt.com](mailto:Raphael@PanLbilt.com)



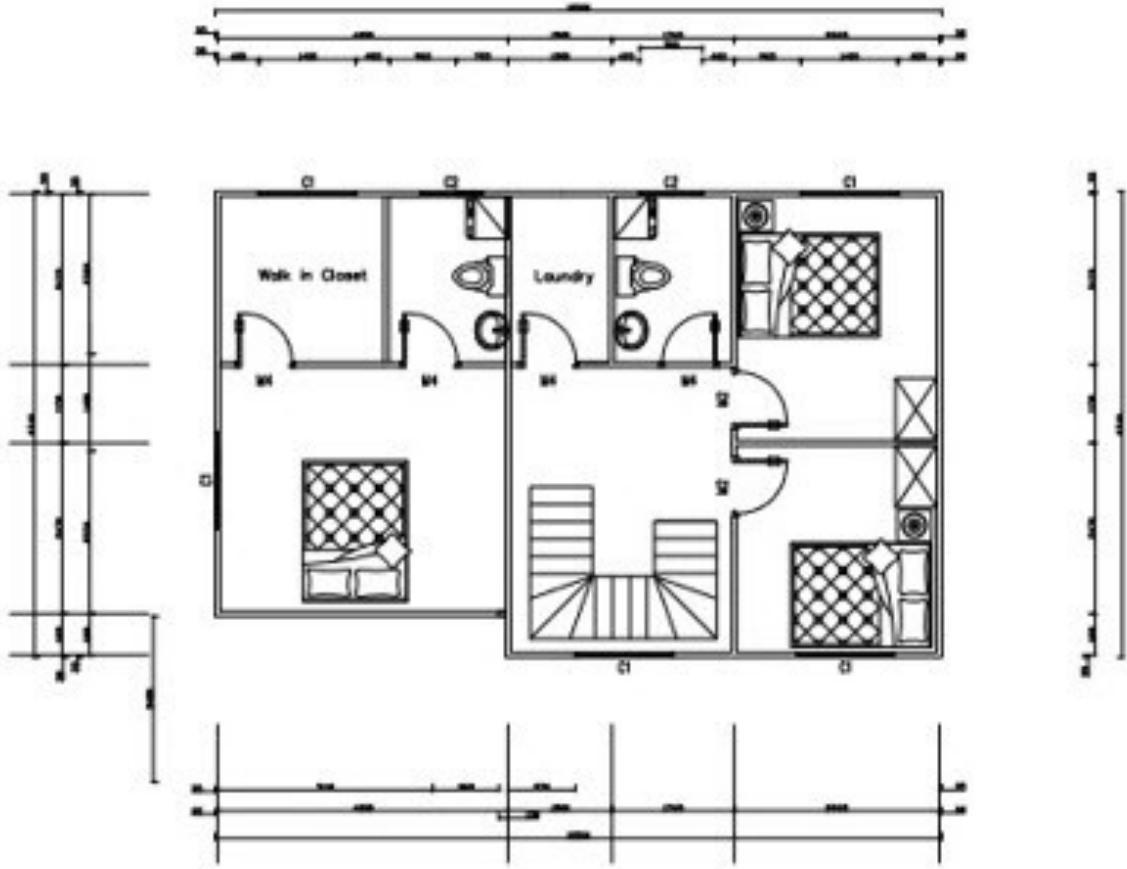
## PANLBILT STEEL & FOAM CEMENT PANELS COMPETITIVE ADVANTAGES

- ◆ **Rapid Assembly: Less than 5 Days to erect the structure**
- ◆ *Rapidly rebuild a permanent house after natural disasters*
- ◆ **Withstands heavy rain**
- ◆ **Life Span: 50-70 years**
- ◆ *Fire Proof: A1 Level*
- ◆ **Main factors affecting actual energy performance of a building: Thermal Conduction, Convection, Radiation & Mass**
- ◆ **Thermal Conductivity: 0.1035 W/m.K**  
(90mm thick wall has the same thermal conductivity as 350mm brick wall)
- ◆ *Thermal Resistance: 0.869 m<sup>2</sup>·K/W surpasses 'r' ratings for fiberglass insulation*
- ◆ **Outperforms framed buildings due to the combination of reduced conduction & convection plus high thermal mass**
- ◆ **Snow Resistance: Snow pressure 8.219 KN/m<sup>2</sup>**
- ◆ *Earthquake Resistance: Up to Richter 9*
- ◆ **Sound Insulation: 40 dB**
- ◆ *Wind Load: Wind speed up to 140 MPH*
- ◆ **Wall Shock Resistance: 500 KG concentrated force**



Second Floor Layout

20.14 feet



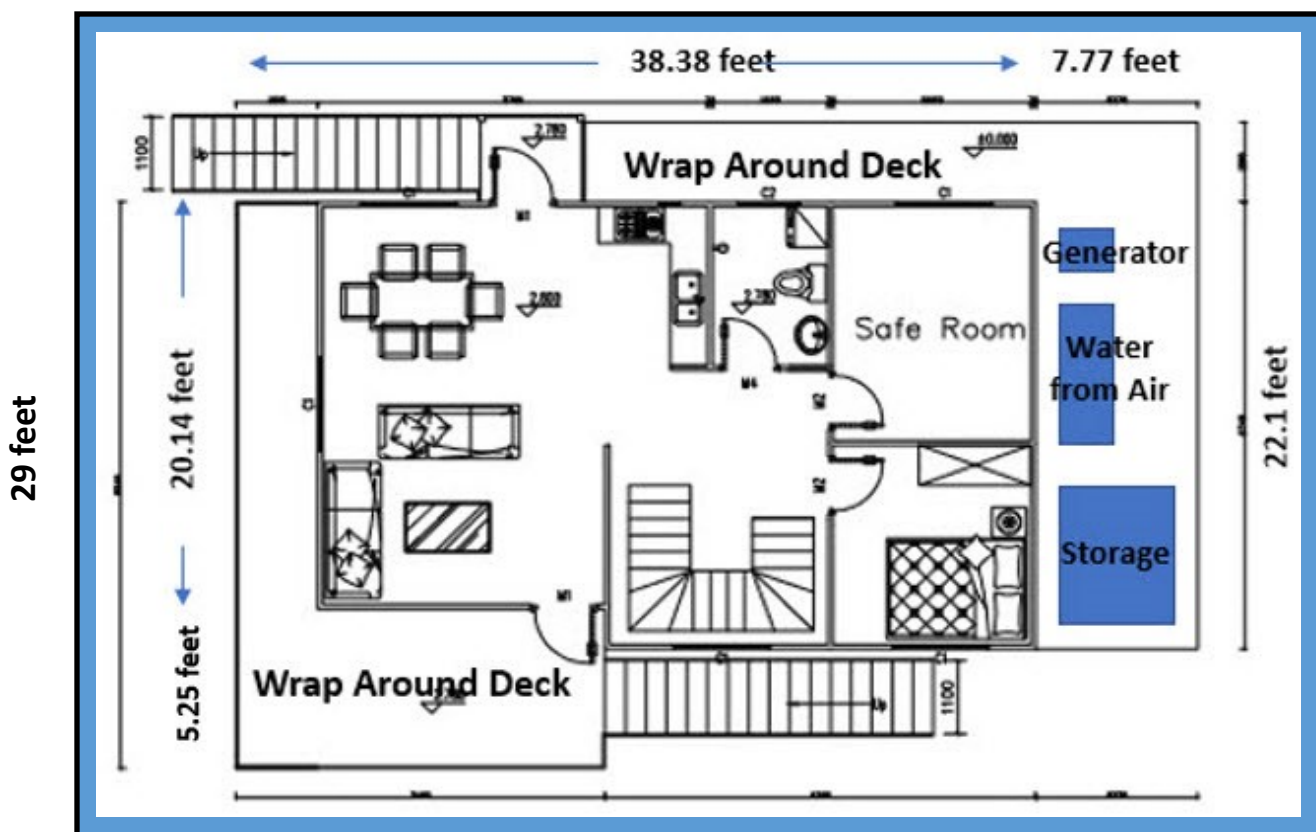
22.1 feet

third Floor Layout

# Cement Foundation Plan

Outside Dimensions of the Building 47' x 29'  
Mounted on Raised Steel Support Structure  
With Wrap-Around Steel Deck on 2nd Floor

47 feet



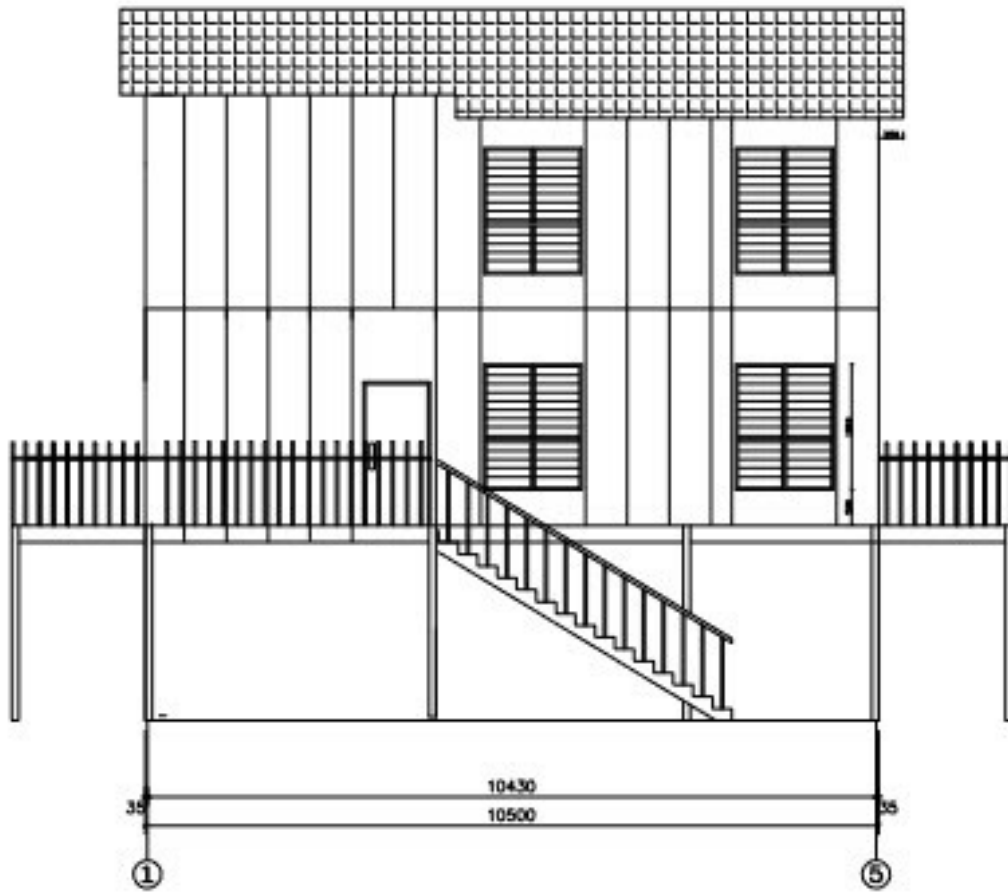
Exterior Walls and Roof Panels: 94 mm/ 3.7" Steel & Foam Cement Panel

Asphalt Shingles: 333mm x 1000 mm / 13.11" x 39.37 "

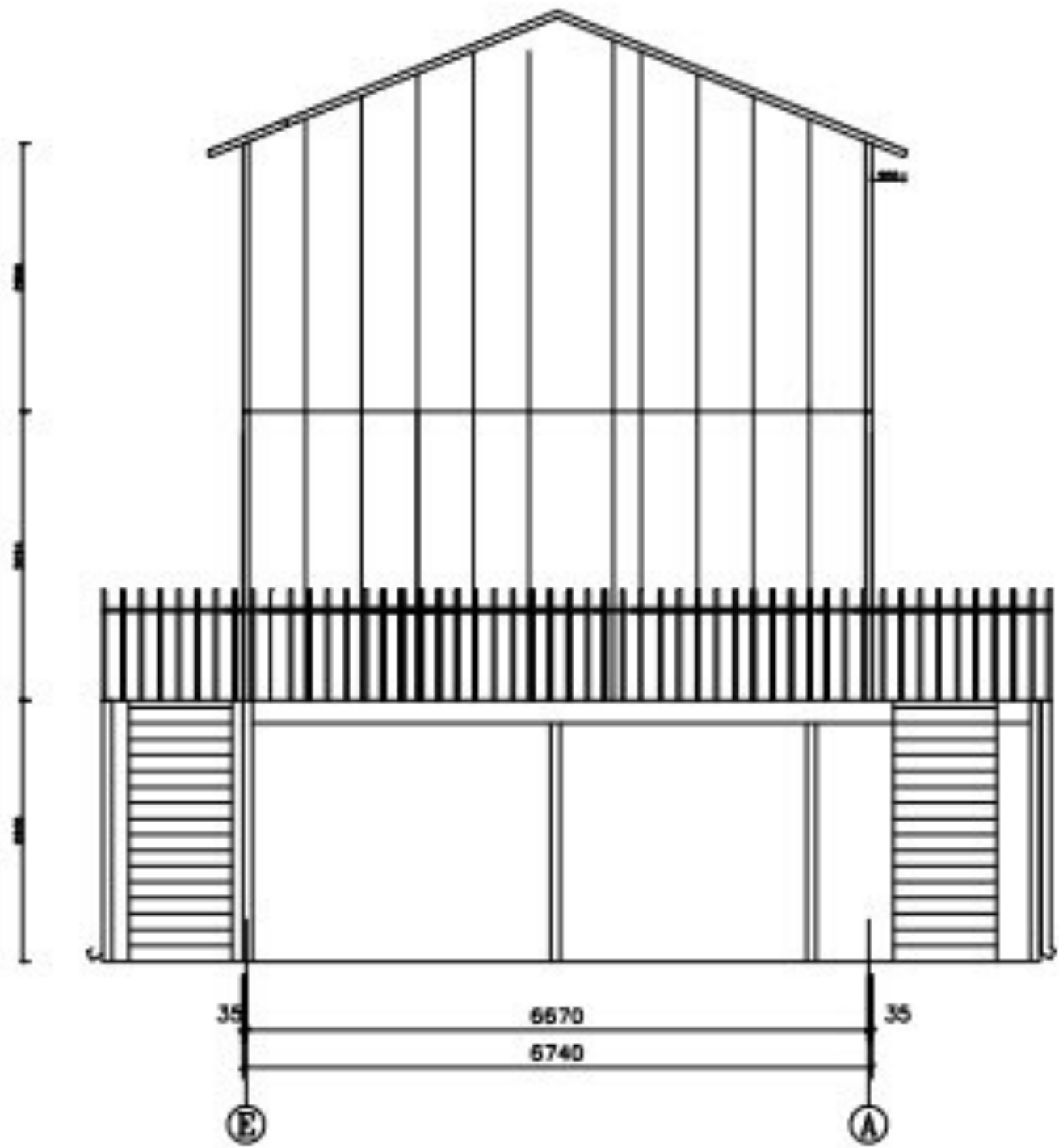
Roof: A Beam Galvanized Angle Iron Steel: 5580mm/219.68" x 3 Pieces

Roof Purline: C Type Steel 80mm x 35mm x 1.5mm/3.15" x 1.37" x 0.06"





Front Elevation



Right Elevation

# SPECIAL OFFER

## **PanLbilt Steel and Foam Cement Panel Construction Kit Includes:**

- ⇒ Exterior/Interior Walls including Safe Room
- ⇒ Full steel wraparound deck on 2nd floor
- ⇒ Electrical & Water Pipes inserted into walls (to be determined)
- ⇒ Doors & Aluminum Alloy Windows
- ⇒ Asphalt Shingle Roof Panel
- ⇒ Double PVC and Gypsum Board Ceiling
- ⇒ Ceramic Tile for Bedroom and Living Room (optional)
- ⇒ Anti-slip tile for Bathrooms (optional)
- ⇒ Wainscoting Wall Panels
- ⇒ Emulsion Paint for External and Internal Wall Panels
- ⇒ Packing in 4-40 foot containers

**KIT PRICE..... Call for Quote**

### OPTIONAL ITEMS:

Flooring, Cabinets, Plumbing Fixtures, etc. provided Upon Request

pan**L**bilt GLOBAL



**100 Liter per day/26.42 Gallon**

**Fresh Drinking Water From Air Unit**

**Meets or exceeds World Health Organization Standards**

**Off-Grid—Independent of municipal infrastructure**



100L Commercial(3Gen)	
Power Supply	110 V/60 Hz or 220-240V/50 Hz
Water Production Rate (Temp: 80F, RH: 80%)	<b>26.4 Gallons per Day</b>
Hot & Cold Options	No
Power Ratings	1.33KW
Power Consumption per Day	<b>31.92KWh</b>
Refrigerant	R407c
Machine Dimension (L x W x H)	1250*542*1263mm
Net Weight	140Kg
Operational Sound (DB)	< or = to 65DB
Display/ Control System	PLC
Water Tank	40L
Water purifier Reservoir /collecting tank	60L
Compressor Brand	<b>Emerson</b>
Warranty	1 Year
Air Filter	G3 Non-woven filter
Filtration System	PPF CTO UDF UF UV Mineralization RO
	1 1 1 0 1 1 1
Working Condition	27C 80RH
Standard Working Temperature	59 degrees to 100 degrees F
Relative Humidity	35% 95%
<b>Cement Pad Mounted</b>	
<b>Shipping packing per container</b>	<b>20 ft      40 ft</b>
	<b>18              40</b>
Gross Container Weight Kg/Lbs W/O Packing	
<b>Slab</b>	126" x 64.96" x 4"

## Optional Fresh Drinking Water Storage Reservoir



- 100% UV protection against the sun to protect drinking water against algae build-up or dirt
- Unique profiled 0.8mm zinalume steel with firmness of shape and mechanical strength
- Corrosion is greatly reduced by the polymer coating between the tank wall and the water stored
- Lifespan of 20 years or longer

### 1000 Liter /264.17 Gallon

- 0.850m  $\varnothing$  x 2.2m H     **2.79 ft.  $\varnothing$  x 7.22 ft. H**
- **Zinalume material**
- 50mm inlet and outlet
- Weight empty—35 kg/77 lbs

### 3000 Liter /792.5 Gallon

- 1.4m $\varnothing$  x 2.2m H     **4.59 ft.  $\varnothing$  x 7.22 ft. H**
- **Zinalume material**
- 50mm inlet and outlet
- Weight empty—60 kg/132 lbs

*Requires anchoring or encasement in cement to withstand winds or water surges*