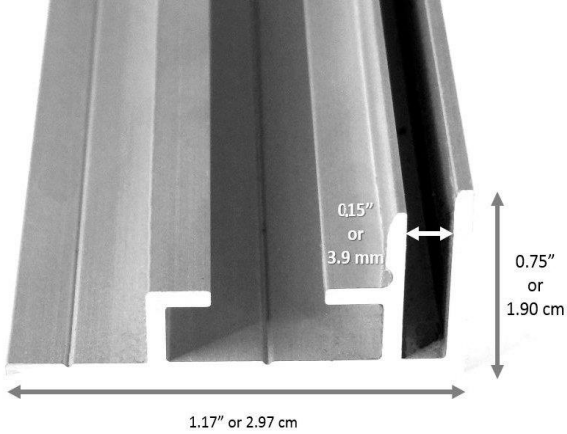
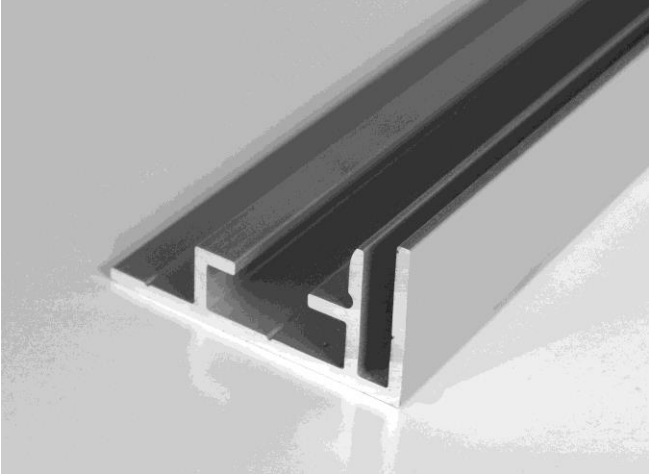


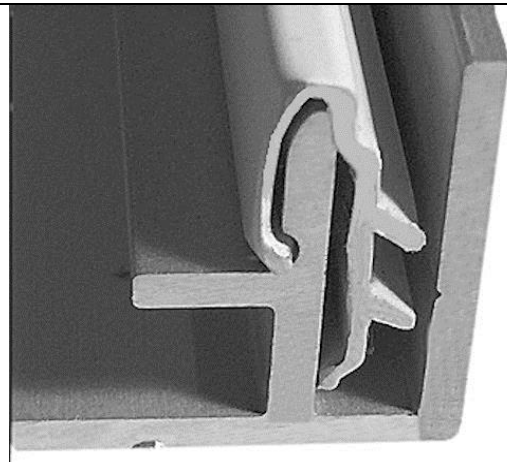


TS2985 – Product Data Sheet

 <p>0.15" or 3.9 mm</p> <p>0.75" or 1.90 cm</p> <p>1.17" or 2.97 cm</p>	<p>TS29 Extrusion Characteristics:</p> <p>Length: 11' 5" or 348 cm</p> <p>Width: 1.17" or 2.97 cm</p> <p>Height: 0.75" or 1.90 cm</p> <p>SEG channel: 0.15" or 3.90 mm</p> <p>Weight: 0.275 lbs. / foot or 0.411 Kg / m</p> <p>Bar Weight: 3.14 lbs. or 1.43 Kg</p>
	<p>Main applications</p> <p>Indoor Small and Medium size high-resolution dye-sublimated fabric graphic</p> <ul style="list-style-type: none"> • Retail Stores • Corporate Lobbies • Board Rooms • Hotels • Car dealers • Sports Arenas • Offices • Theaters • Tradeshows...
	

Once the TS29 frame is fabricated the next step is to add the TS85 PVC insert.



TS29 (aluminum Extrusion) + TS85 (PVC insert)

TS85 Extrusion Characteristics:

- Length: 10' or 254 cm
- Width: 0.26" or 6.80 mm
- Height: 0.45" or 11.32 mm
- Weight: 0.3 Oz. / foot or 0.28 g / m
- Bar Weight: 3 Oz. or 85.05 g.



PVC TS85 insertion after cutting it to the right length. TS85 segments can easily be joined to reach the desired length.



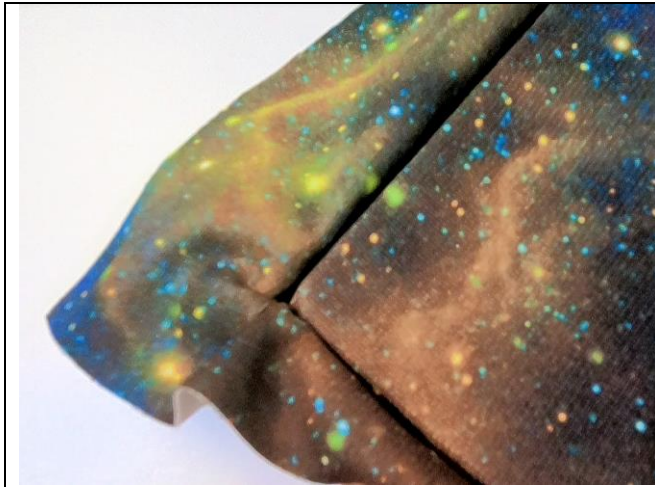
The frame is centered onto the chosen textile. Leave a minimum of 2" bleed all around the frame.



TS100 - Tensor Tool



Insertion of the textile in the extrusion channel.



Detail of the frame corner with inserted textile.



Cut extra textile (Bleed) with a very practical 8" shear



Cutting extra textile all around the frame



Pushing the visible remaining textile in the groove with the tensor.



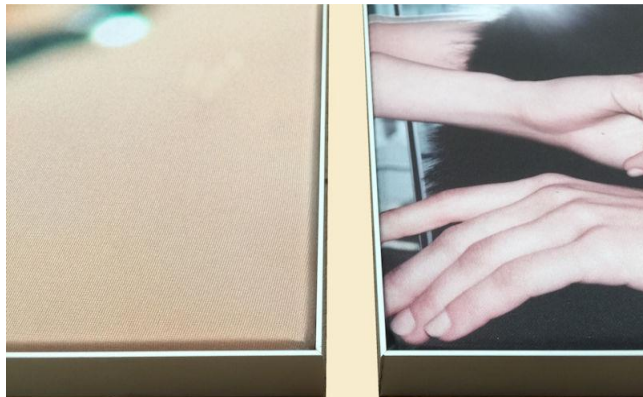
The frame is now completed.



The result is a drum-like tension even with non-stretchable textile.



The chosen textile is perfectly stretched without the burden of sewing a silicon ribbon.
No heavy equipment (Sewing machine) investment necessary to get this great result.



Side by Side Comparison

- On the left a TS29 + TS85 frame for stretching any textiles (Over 4 Oz.)
- On the right a classic Silicon Edge Graphic frame with silicon ribbon (Kider) sewed on stretchable printed textile.



Z-Cleat – They can be found in different lengths to be adjusted to the size of your frame.

How to show your frames?

Two options are available:

- 1- Either by using Z-cleats (If you choose to fabricate a rigid frame, Max dimensions 10' x10')
- 2- Or by screwing the TS29SEG extrusion directly to a support (walls, boards, existing structures...) No limit in frame size.

We recomend to watch the two 2-minute videos on our wesite at the TS85 + TS29 web page.

Video 1: [How to fabricate a rigig frame destined to be hung.](#)

Video 2: [How to stretch the textile on the frame.](#)