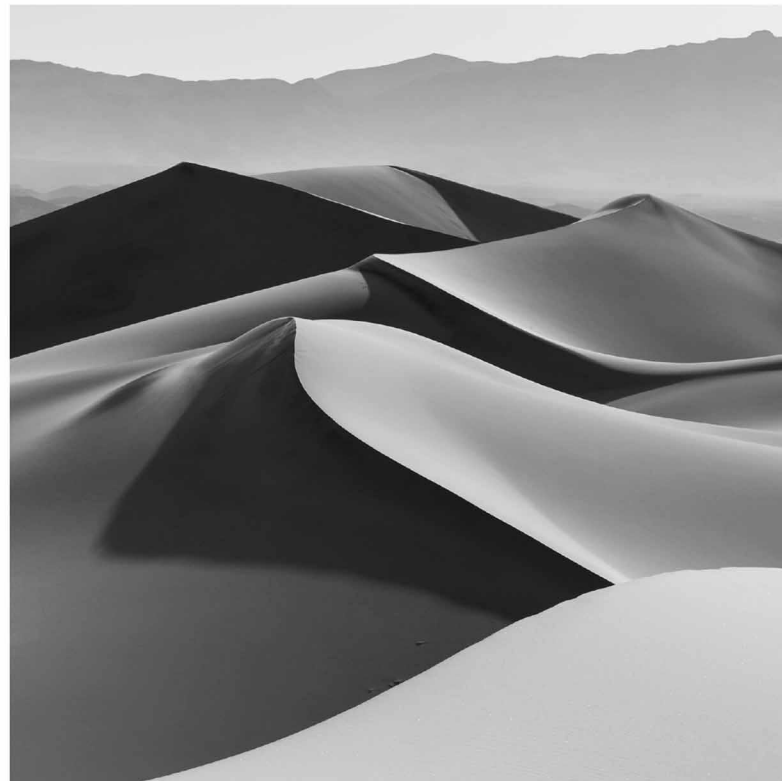




Sand Dune Collection

Crashing waves and offshore breezes shift the sandy beaches.
Sudden storms and powerful winds change the shape of deserts.
What exists one day, in all of its beauty and glory, is gone the next.

Capturing the moment in time before nature has her say and
the transformation into another dimension is the work of the artist.
Keiko Mita's Sand Dune collection walks the fine line between
what is and what will be. The movement and texture of
her jewelry is timeless.





Kite shape pendant - 18k yellow gold, diamonds.
Stackable rings - 18k yellow, rose and white gold, diamonds.



Square puzzle earrings - 18k yellow gold, diamonds.



Red island pendant - 18k yellow gold, ruby, pink sapphires, diamonds.
Ocean dream ring - 14k yellow gold, labradorite, blue sapphires, diamond.



Pebble pendants - 14k yellow gold, labradorite, diamond.
Round studs - 18k yellow gold, sterling silver, diamonds.



Wedding bands - 18k yellow gold, diamonds.



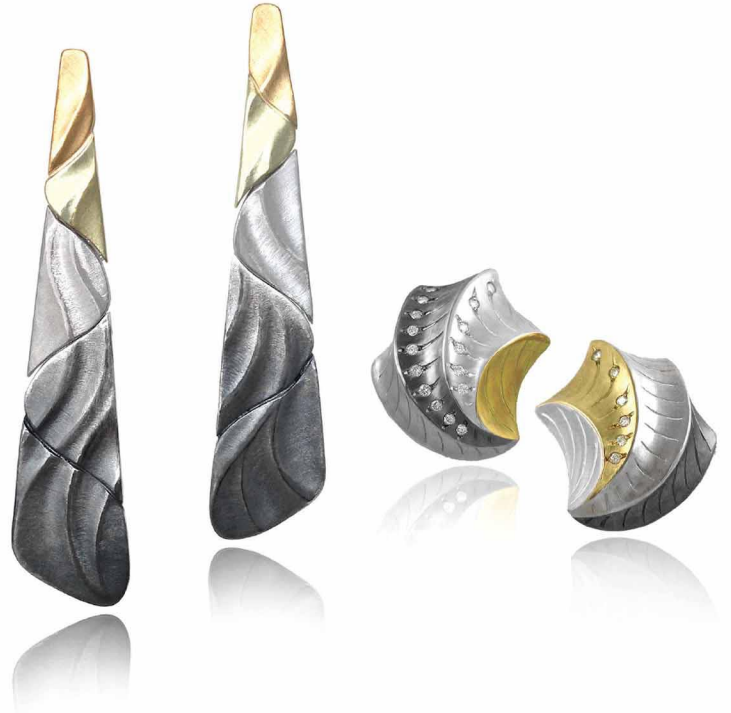
Open pebble earrings - 18k yellow gold, 18k white gold, diamonds.
Crescent pendant - 18k yellow gold, 18k white gold, diamonds.



Holding you earrings - 18k yellow gold, tahitian pearls.
Iris ring - 18k yellow gold, tanzanite.



Seafoam necklace - 18k yellow gold, aquamarine, green quartz.



Ombre earrings - 18k yellow gold, 14k green gold, sterling silver, oxidized silver.
Sea shell earrings - 18k yellow gold, sterling silver, oxidized silver, diamonds.



Tidal pin / pendant -
18k yellow gold, 14k green gold, sterling silver, oxidized silver, diamonds.

www.k-mita.com

design@k-mita.com 646-633-4573