

Seginus Aerospace LLC is pleased to introduce 340-166-101-0EH Oil Tube Assembly

The Oil Tube Assembly **P/N 340-166-101-0EH** has installation application in the GE engine subassemblies on Model CFM56-7B Series Engines.

Seginus Aerospace LLC has released the following FAA PMA replacement part to aid in your cost reduction programs when maintaining your CFMI CFM56-7B Series Engines. Installation on the Frame Rear LPT.

340-166-101-0EH – Oil Tube Assembly

For additional information, contact our USA offices or your regional distributor.

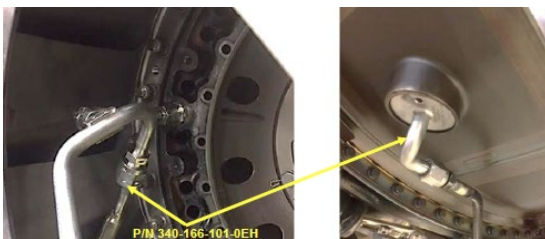
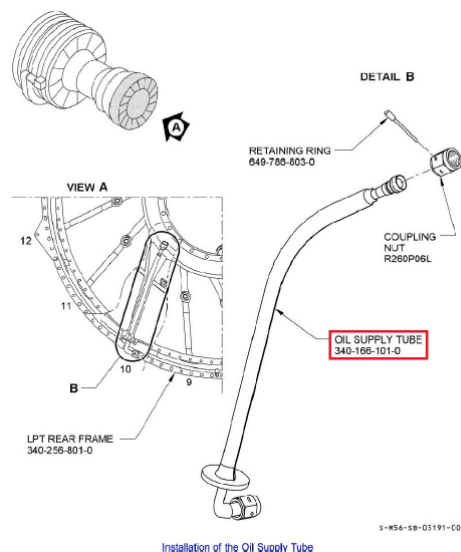
OEM Part Numbers:
340-166-101-0

PMA Part Numbers:
340-166-101-0EH

Quantity Per Unit:
One

Installation:
CFMI CFM56-7B Series

CMM Reference:
72-56-00



Scan for more
information or log on
www.seginusinc.com

114 Kirkland Circle
Suite B
Oswego, IL 60543

Tel: 630-800-2795
Fax: 630-800-2097

Also check out our
company page on
LinkedIn.

