

CUSTOM COATINGS



MANUFACTURER OF SPECIALTY PAINT



INDUSTRIAL

Water based, solvent based and 2K coatings

- Industrial Coatings
- Corrosion Resistant Coatings
- Aerosol Paint Technology
- High Solids
- Architectural Finishes



INDUSTRIAL MAINTENANCE

Water based, solvent based and 2K coatings

- Maintenance Enamels
- DTM Finishes
- Epoxies
- Urethanes
- Dryfalls

Since 1916, over 200 million gallons of coatings & paints has been manufactured from Continental Products.

Whether you require an industrial paint or polymer floor & wall coatings Continental Products has the ability to provide a vast library of formulations to meet your composition & specification needs. Continental Products designs the paint that works best for your facility.

Continental Products formulates paint for a purpose. Our skilled team members are known as problem solvers providing a diagnoses & solutions for even the most complex coating requirements. We are committed to making paint a dependable part of your manufacturing process.





CUSTOMER FOCUSED R&D

Our Teams' **Research & Development** is focused on solving problems in the real world of paint lines & government regulations.

The typical corporate approach of trying to influence the paint customer to use an existing paint or paint system is no longer an adequate solution for many companies.

Most of Continental Products' paints are **custom-designed** to fit the exact requirements of our customers' specifications & paint lines. That's because we keep our avenue of research as open as possible by not imposing strict limits on their raw material choices.

This open-ended approach, along with the creativity of our chemists, has yielded breakthrough paint technologies that will fit your demanding production requirements.

Customer Designed Coatings, Your Product will be Determined by your Specific Requirements such as:

- Emissions
- Color & Gloss
- Dry Time
- Substrate
- Paint Line Parameters
- Corrosion Resistance
- Surface Characteristics
- Surface Hardness
- UV Resistance
- VOC

Regular Testing, Evaluation & Development of our Paints for:

- Salt Spray
- Humidity
- Stone Chip Resistance
- Adhesion
- Impact
- Bend
- Fluid Immersion
- Heat Resistance
- Hardness
- UV Resistance

All our paints are tested to meet varying levels of performance based on customer specifications.

A Complete Range of Primers and/or Topcoats Formulated in:

- Waterborne (solutions & emulsions) - air dry/bake
- High Solids - air dry/bake
- Urethanes - 2K/Low VOC/ Water-reducible
- Epoxy- solvent based/water based

With a whole range of gloss & pencil hardness characteristics.

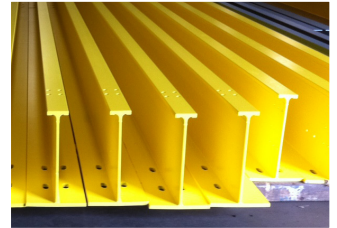
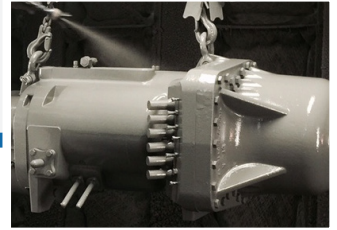
Applications include:

- Conventional Spray
- Electrostatic Spray
- Dip
- Flow Coat

As well as adaptations to your particular application method.

Paints Formulated for Use over a Wide Range of Substrates including:

- Bare Steel
- Iron & Zinc Phosphated Steel
- Aluminum
- Brass
- Primed Surfaces
- Plastic





PAINT SOLUTIONS THAT WORK

Engineering “First” in the Coating Industry:

- 2K Isocyanate Free Low VOC Machine Enamel with optional texture additive for one step texture finish
- Low VOC Waterborne Enamel for US Truck Manufacturer
- Low VOC & HAPS Waterborne Air Dry Enamel for Brass/Copper Radiators
- 2K High Gloss Water-Reducible Urethane for a Major Truck Manufacturer
- Water-Reducible, Air-Dry, Non-Acidic, Corrosion-Resistant Casting Sealer with 500°F (260°C) Tolerance
- “0” VOC 2K High Gloss Urethane with Special Monobake Primer
- 1000 hours Salt Spray Low Temp Cure Primer (200°F / 93°C)
- Patented Waterborne Coating for Flexible Foam

Packaging:

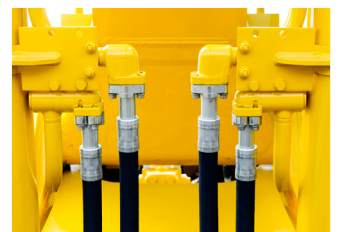
Product is supplied in custom designed totes for high volume customers, as well as 55-gallon drums, 5-gallon pails and 1-gallon containers.

Customer Base:

A number of our paint products are approved & used by major Truck, Automotive & Automotive-related Supply Companies.

A partial list of the industries we supply includes:

- Tier 1 Automotive Suppliers
- Truck, Bus & Equipment OEM
- OEM Compressor Manufacturers
- Radiator Manufacturers
- Machine Manufacturers
- Metal Cabinetry
- Lawn & Garden Equipment
- Gas Meters Manufacturers
- Air Conditioning Manufacturers
- Overhead Crane Manufacturers
- Pump Manufacturers
- Conveyor
- Material Handling



Stay Connected



ContinentalPaints.com



@ContinentalProductsCo



@coatingspros



Continental Products



@CoatingsPros



216-531-0710



info@continentalpaints.com



Product Lines

ORU•TECH

Custom OEM Coatings Solutions

ORU•SHIELD

When maximum performance is required! This high build, two component urethane system features the highest levels of gloss and color retention, maximum corrosion resistance (surpasses 2,000 in salt spray) excellent adhesion, outstanding resistance to chemicals, abrasion and thermal shock. Quick Dry, low VOC.

ORU•THANE

Two component urethanes with outstanding corrosion resistance (1,000 hours in salt spray), excellent adhesion, gloss and color retention. Outstanding resistance to chemicals and abrasion. Ultra quick dry and low VOC.

ORU•CRYL

Quick dry, low VOC, acrylic blend enamels and primers. Available in water base or solvent base. Excellent corrosion resistance in DTM and primer/topcoat applications. Enhanced gloss and color retention. Resists abrasion and mild chemicals.

ORU•COAT

Quick dry, low VOC, alkyd blend enamels and primers. Available in water base or solvent base. Excellent corrosion resistance, in DTM and primer/topcoat applications. Resists fading, abrasion and mild chemicals.

ORU•GARD

Quick dry, low VOC, epoxies. Available in water base or solvent base. Excellent corrosion resistance in DTM and primer/topcoat applications. Outstanding chemical and abrasion resistance.

ORU•SPEC

High Performance Industrial Maintenance Coatings

9000

Two Component Urethane – Excellent gloss and color retention. Outstanding corrosion, chemical and abrasion resistance and low VOC. Brush, roll or spray.

8000

Waterborne Industrial Maintenance Enamels – Highly durable, easy to apply maintenance enamels. Excellent gloss and color retention. Outstanding corrosion resistance in DTM applications. Excellent adhesion, fade resistant, abrasion resistant, low VOC. Brush roll or spray.

7000

Solvent Base Industrial Maintenance Enamels – Highly durable, easy to apply maintenance enamels. Outstanding corrosion resistance in DTM applications. Excellent adhesion, fade resistant, abrasion resistant, low VOC. Brush, roll or spray.

6000

Water Base Epoxy – Extremely durable, easy to apply epoxy. Excellent abrasion and chemical resistance, low VOC. Brush, roll or spray.

5000

Solvent Base Epoxy – Extremely durable, surface tolerant, easy to apply epoxy. Excellent abrasion and chemical resistance, low VOC. Brush, roll or spray.

4000

Water Base Dryfall Coatings – Excellent hiding, quick dry, low odor, low VOC, spray applied, drop dry coating. Overspray falls as dry powder in 8-16 feet (temperature and humidity dependent)

3000

Alkyd Dryfall Coatings – Excellent hiding, quick dry, low VOC, spray applied, drop dry coating. Overspray falls as dry powder in 8-16 feet (temperature and humidity dependent)