



# OneStream Relational Solutions in a Fraction of the Time

## Revfore Accelerate + Genesis

### Revfore Accelerate

**Revfore Accelerate** is a no-code solution that enables OneStream administrators, developers, power users, and partners to rapidly build relational data solutions inside OneStream – from creating relational data structures and managing the data within them, to surfacing that data in dynamic, data-driven dashboards that seamlessly integrate into **OneStream Genesis**.

Together, **Revfore Accelerate + Genesis** handle the careful orchestration typically required across relational data modeling, solution logic, dashboards, and navigation – helping teams turn relational data into governed, maintainable OneStream solutions faster.



#### No-Code Solution

Create relational data models and dashboards without code



#### Simple Data Management

Manage and navigate relational data with flexible tools



#### Genesis Integration

Surface data-driven dashboards inside OneStream Genesis



SCAN QR CODE HERE

✉ [info@revfore.com](mailto:info@revfore.com)

☎ (801) 592-1144

🌐 [www.revfore.com](http://www.revfore.com)

The screenshot shows the 'Relational Models' section with a table of models and a 'Child Views' section with a detailed table of columns and expressions.

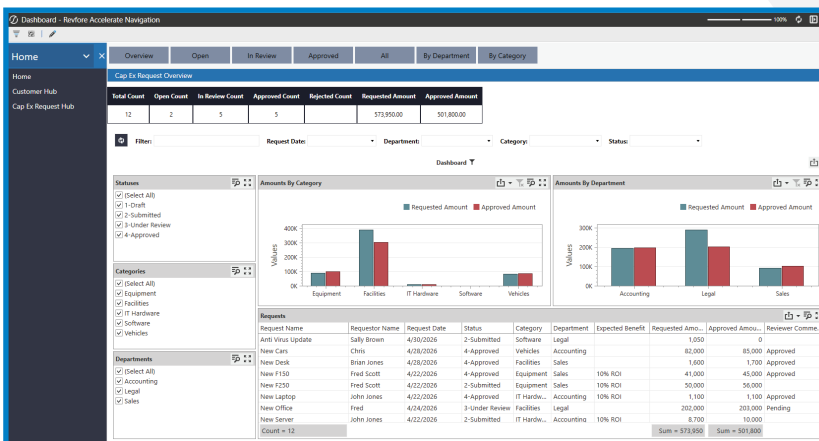
*Relational M	*Model Column Name	*Model Column Display	*Relational Column	*Sequence	*Model Column Expression	*Lookup	*Dyna
CapExRequest	CapRqt_ExpectedBenefit	Expected Benefit	CapExRequest   ExpectedBenefit	11			
CapExRequest	CapRqt_TotalApprovedAmount	Total Approved Amount	CapExRequest   TotalApprovedAmount	12			
CapExRequest	CapRqt_ReviewerComments	Reviewer Comments	CapExRequest   ReviewerComments	13			
CapExRequest	CapRqtLnAgg_CapRqtLn_Extended	Total Amount	v_CapExRequestLine_m5   CapRqtLn_Exten	14			
CapExRequest	CapRqtLnAgg_CapRqtLn_CapExRe	Line Count	v_CapExRequestLine_m5   CapRqtLn_CapEx	15			
CapExRequest	CapRqt_LineUniqueCode	Ext Ref Unique Code	Ext Ref Unique Code	16	Trim(trimstr(AlIAS)) CapExRequest		
CapExRequest	CapRqt_CreatedDate	Created Date	CapExRequest   CreatedDate	17			
CapExRequest	CapRqt_CreatedBy	Created By	CapExRequest   CreatedBy	18		User Lookup	
CapExRequest	CapRqt_ModifiedDate	Modified Date	CapExRequest   ModifiedDate	19			
CapExRequest	CapRqt_ModifiedBy	Modified By	CapExRequest   ModifiedBy	20		User Lookup	
CapExRequest	CapRqt_OpenCount	Open Count		21	case when (AlIAS)   StatusId in (1) th		
CapExRequest	CapRqt_InReviewCount	In Review Count		22	case when (AlIAS)   StatusId in (2,3) th		
CapExRequest	CapRqt_ApprovedCount	Approved Count		23	case when (AlIAS)   StatusId in (4) th		
CapExRequest	CapRqt_RejectedCount	Rejected Count		24	case when (AlIAS)   StatusId in (5) th		
CapExRequest	CapRqt_LineNumber	Line Number	CapExRequest   LineNumber	25			

Revfore Accelerate allows custom relational tables to be linked together to build reusable relational data models and views.

The screenshot shows a dashboard with a table of 'Cap Ex Requests - Open'. The table includes columns for Request ID, Request Name, Request Date, Requestor Name, Department, Category, Status, Needed By Date, In Service Date, and Business Justification.

Request Id	Request Name	Request Date	Requestor Name	Department	Category	Status	Needed By Date	In Service Date	Business Justification
1005	New Office	04-24-2026	Fred	Legal	Facilities	1-Draft	07-24-2026	10-24-2026	Replacement
1007	New Server 2	04-22-2026	John Jones	Accounting	Facilities	1-Draft	05-11-2026	07-14-2026	Replacement
1008	New Truck	04-26-2026	Jack Black	Legal	Facilities	1-Draft	04-26-2026	04-26-2026	
1009	New Van	04-26-2026	Jack	Legal	Equipment	1-Draft	04-26-2026	05-14-2026	The old van broke down

Add, edit, copy, filter, import, export, and navigate connected relational data directly in OneStream.



Integrate the relational views you create with Revfore Accelerate directly into OneStream Genesis or other dashboard tools.

## Relational Tables, Models & Views

Revfore Accelerate makes it simple to create custom relational tables and then link those tables to build reusable relational data models. In turn, relational views can reference the models and further refine which columns are included for specific reporting needs. Key capabilities include:

- Create custom relational tables in minutes
- Define columns, data types, attributes and relationships
- Create expression and lookup type columns
- Define security and parent-child relationships
- Control end-user actions

## Data Management

Revfore Accelerate provides powerful yet simple tools for managing relational data directly in OneStream. Users can enter, update, filter, import, export, and navigate data using familiar, flexible tools. Key capabilities include:

- Add, edit, copy, and delete records
- Bulk update records across multiple rows
- Export to and import from Excel
- Edit data in a spreadsheet-style interface
- Navigate between related records
- Filter data using contains and drop-down filters

## Dashboard Integration

Relational views created in Revfore Accelerate can be easily integrated into OneStream Genesis or custom dashboards. Key capabilities include:

- Create menu-driven relational data applications
- Reuse relational views across multiple dashboards and solutions
- Display view data in dynamic grids, pivot grids, summary cards and custom adapter dashboards
- Select filters and control field editability
- Link and auto-filter dependent views